

(BARI2.BARII) 19227

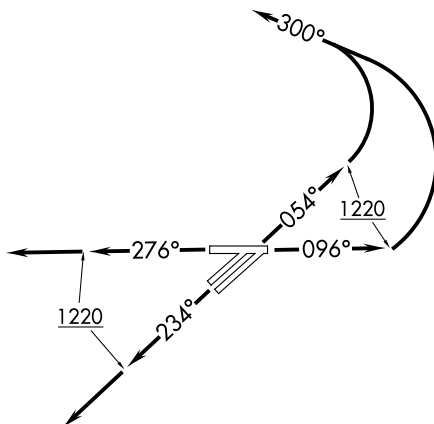
# BARII TWO DEPARTURE (RNAV)

AL-467 (FAA)

WILLOW RUN (YIP)  
DETROIT, MICHIGAN

**TOP ALTITUDE:  
ASSIGNED BY ATC**

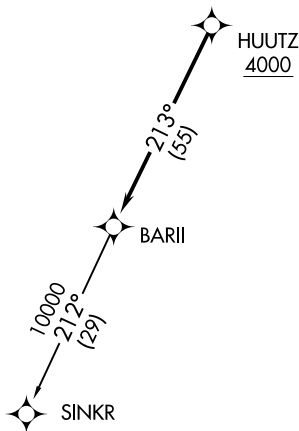
ATIS  
127.425  
GND CON  
119.975  
WILLOW RUN TOWER  
125.275 256.9  
DETROIT DEP CON  
118.95 284.0



### TAKEOFF MINIMUMS:

Rwys 5L/R, 9, 23L/R, 27: Standard with minimum climb of 500' per NM to 1220.

- NOTE: RNAV 1.
- NOTE: RADAR required.
- NOTE: DME/DME/IRU or GPS required.
- NOTE: Turbojet departures at/above 10000, maintain 280K until advised by ATC.
- NOTE: If unable to accept 500' per NM climb rate, advise clearance delivery on initial contact.



NOTE: Chart not to scale.

## DEPARTURE ROUTE DESCRIPTION

TAKEOFF RUNWAYS 5L/R: Climb on heading 054° to 1220, then left turn heading 300° for RADAR vectors to cross HUUTZ at or above 4000, thence....

TAKEOFF RUNWAY 9: Climb on heading 096° to 1220, then left turn heading 300° for RADAR vectors to cross HUUTZ at or above 4000, thence....

TAKEOFF RUNWAYS 23L/R: Climb on heading 234° to 1220, then on heading 234° for RADAR vectors to cross HUUTZ at or above 4000, thence....

TAKEOFF RUNWAY 27: Climb on heading 276° to 1220, then on heading 276° for RADAR vectors to cross HUUTZ at or above 4000, thence....

....on track 213° to BARI2, then on (transition). Maintain ATC assigned altitude, expect filed altitude 10 minutes after departure.

SINKR TRANSITION (BARI2.SINKR):

# BARII TWO DEPARTURE (RNAV)

(BARI2.BARII) 15AUG19

DETROIT, MICHIGAN  
WILLOW RUN (YIP)

EC-1, 05 NOV 2020 to 03 DEC 2020

EC-1, 05 NOV 2020 to 03 DEC 2020