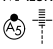


LOC/DME I-LSW <b>109.5</b> Chan <b>32</b>	APP CRS <b>233°</b>	Rwy Idg 596 <b>7543</b> TDZE <b>712 710</b> Apt Elev <b>716 716</b>
-------------------------------------------------	------------------------	------------------------------------------------------------------------------------

# ILS or LOC RWY 23L

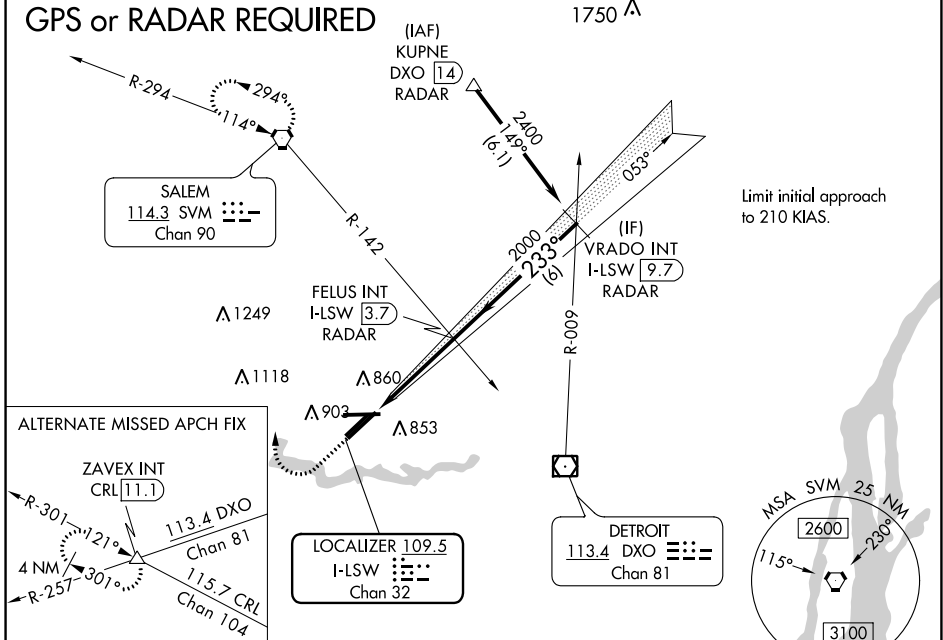
WILLOW RUN (YIP)

**⚠** Inoperative table does not apply to S-ILS 23L.  
**⚠** For inoperative MALSR, increase S-LOC 23L Cat A/B visibility to 1 mile.  
 Helicopter visibility reduction below 3/4 SM NA.

MALSR  MISSED APPROACH: Climb to 1400 then dimbing right turn to 3000 direct SVM VORTAC and hold.

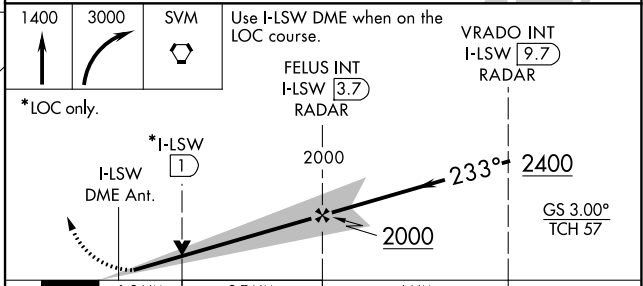
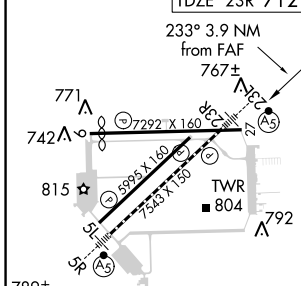
ATIS <b>127.425</b>	DETROIT APP CON <b>118.95 284.0</b>	WILLOW RUN TOWER <b>125.275 256.9</b>	GND CON <b>119.975</b>
------------------------	----------------------------------------	------------------------------------------	---------------------------

## GPS or RADAR REQUIRED



Limit initial approach to 210 KIAS.

ELEV 716	<b>D</b> TDZE 23L 710 TDZE 23R 712
----------	---------------------------------------



TDZ/CL Rwy 5R HIRL Rwy 5R-23L MIRL Rwy 5L-23R, and 9-27	FAF to MAP 3.9 NM				
Knots	60	90	120	150	180
Min:Sec	3:54	2:36	1:57	1:34	1:18
<b>C</b> CIRCLING	1220-1	504 (600-1)	1140-1½ 428 (500-1½)	1140-2 428 (500-2)	1400-2¼ 684 (700-2¼)

EC-1, 05 NOV 2020 to 03 DEC 2020

EC-1, 05 NOV 2020 to 03 DEC 2020