

# MIGGY TWO DEPARTURE (RNAV)

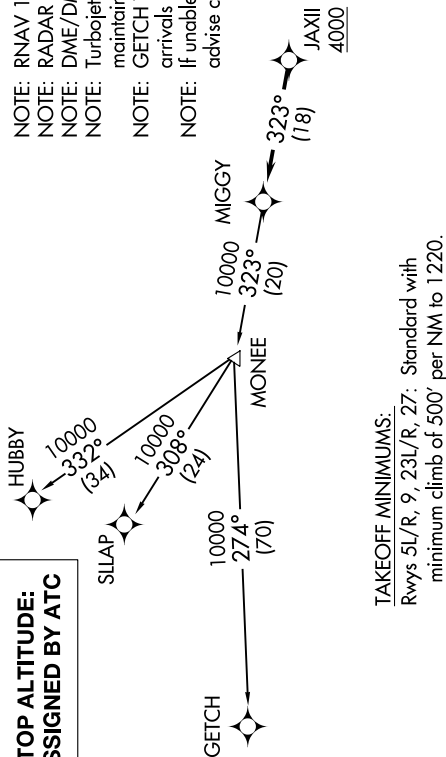
AL-467 (FAA)

DETROIT, MICHIGAN

EC-1, 05 NOV 2020 to 03 DEC 2020

ATIS  
127.425  
GND CON  
119.975  
WILLOW RUN TOWER  
125.275 256.9  
DETROIT DEP CON  
118.95 284.0

- NOTE: RNAV 1.  
NOTE: RADAR required.  
NOTE: DME/DME/IRU or GPS required.  
NOTE: Turbojet departures at/above 10000, maintain 280K until advised by ATC.  
NOTE: GETCH TRANSITION: For use by KMIKE area arrivals only, or as assigned by ATC.  
NOTE: If unable to accept 500' per NM climb rate, advise clearance delivery on initial contact.



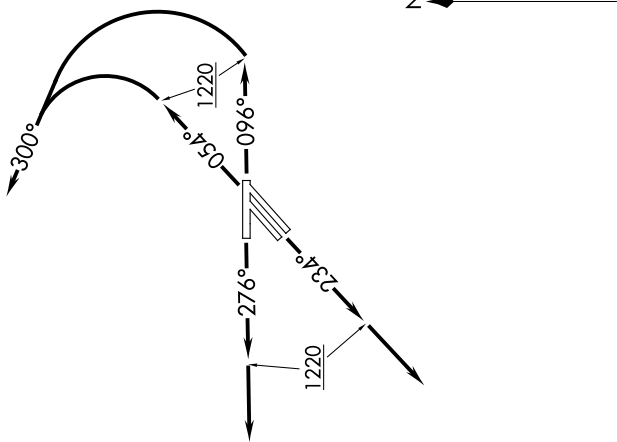
### TAKEOFF MINIMUMS:

Rwys 5L/R, 9, 23L/R, 27: Standard with minimum climb of 500' per NM to 1220.

### DEPARTURE ROUTE DESCRIPTION

**TAKEOFF RUNWAYS 5L/R:** Climb on heading 054° to 1220, then left turn heading 300° for RADAR vectors to cross JAXII at or above 4000, thence...  
**TAKEOFF RUNWAY 9:** Climb on heading 096° to 1220, then left turn heading 300° for RADAR vectors to cross JAXII at or above 4000, thence...  
**TAKEOFF RUNWAYS 23L/R:** Climb on heading 234° to 1220, then on heading 234° for RADAR vectors to cross JAXII at or above 4000, thence...  
**TAKEOFF RUNWAY 27:** Climb on heading 276° to 1220, then on heading 276° for RADAR vectors to cross JAXII at or above 4000, thence...  
 ...on track 323° to MIGGY, then on (transition). Maintain ATC assigned altitude, expect filed altitude 10 minutes after departure.

**GETCH TRANSITION (MIGGY2.GETCH):**  
**HUBBY TRANSITION (MIGGY2.HUBBY):**  
**SILAP TRANSITION (MIGGY2.SILAP):**



NOTE: Chart not to scale.

EC-1, 05 NOV 2020 to 03 DEC 2020