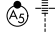


WAAS CH <b>81910</b> <b>W23A</b>	APP CRS <b>233°</b>	Rwy ldg <b>7543</b> TDZE <b>710</b> Apt Elev <b>716</b>
--	------------------------	---

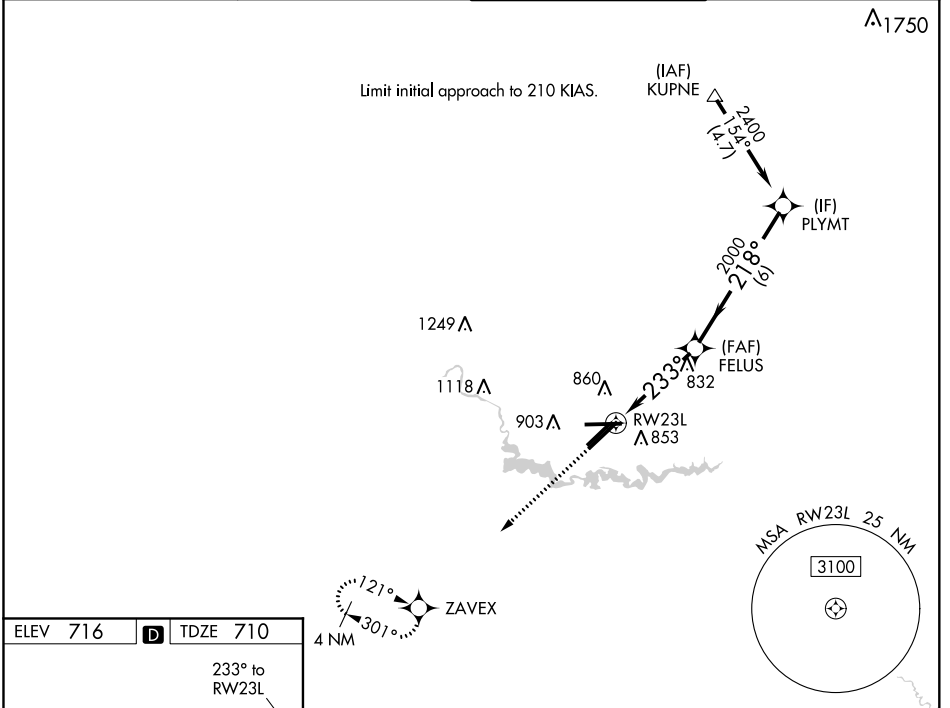
# RNAV (GPS) RWY 23L

WILLOW RUN (YIP)

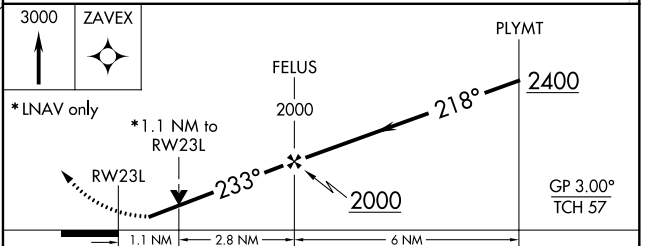
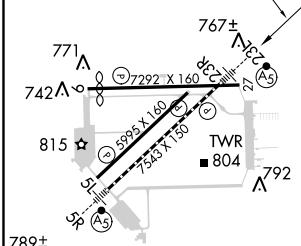
**⚠** Inoperative table does not apply to LPV. For uncompensated Baro-VNAV systems, LNAV/VNAV NA below -19°C (-2°F) or above 54°C (130°F). For inop MALSR, increase visibility LNAV/VNAV all Cats to ¾ mile and LNAV Cat A/B to 1 mile, Cat C/D to 1½ mile. DME/DME RNP-0.3 NA. Helicopter visibility reduction below ¾ SM NA.

MALSR 	MISSED APPROACH: Climb to 3000 direct ZAVEX and hold.
--	--

ATIS <b>127.425</b>	DETROIT APP CON <b>118.95 284.0</b>	WILLOW RUN TOWER <b>125.275 256.9</b>	GND CON <b>119.975</b>
------------------------	--	--	---------------------------



ELEV 716	<b>D</b>	TDZE 710
----------	----------	----------



CATEGORY	A	B	C	D
LPV DA		959-¾	249 (300-¾)	
LNAV/VNAV DA		974-¾	264 (300-¾)	
LNAV MDA		1100-¾	390 (400-¾)	
<b>C</b> CIRCLING	1 220-1	504 (600-1)	1220-1½ 504 (600-1½)	1400-2¼ 684 (700-2¼)

TDZ/CL Rwy 5R  
HIRL Rwy 5R-23L  
MIRL Rwy 5L-23R, and 9-27

EC-1, 05 NOV 2020 to 03 DEC 2020

EC-1, 05 NOV 2020 to 03 DEC 2020