

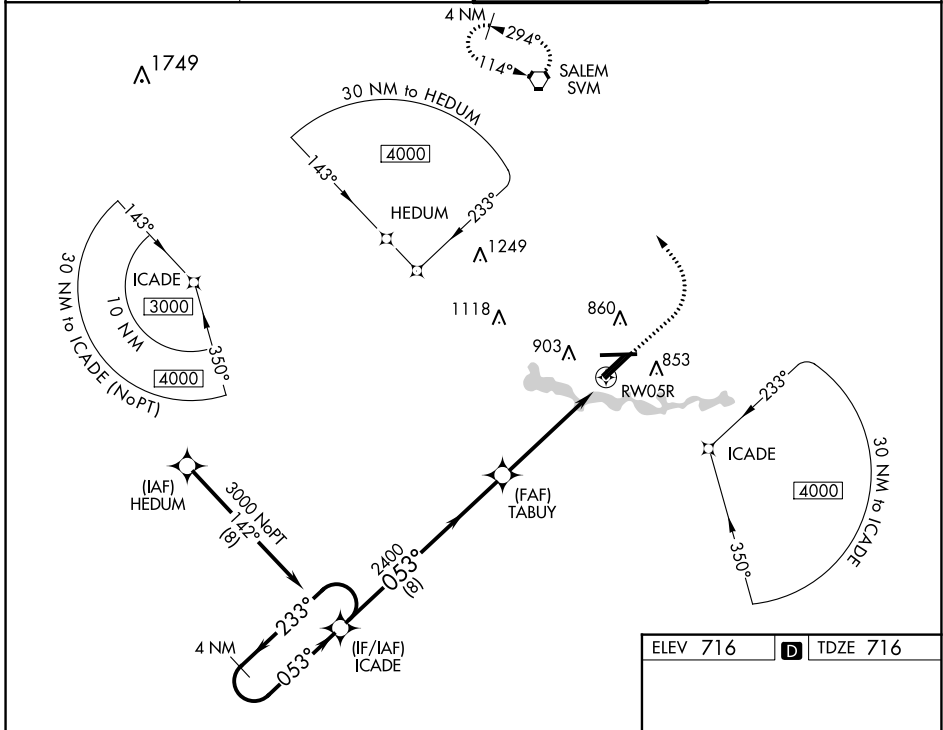
WAAS CH 97718 W05A	APP CRS 053°	Rwy ldg TDZE Apt Elev	7543 716 716
--	------------------------	-----------------------------	---

RNAV (GPS) RWY 5R

WILLOW RUN (YIP)

<p>▼ Circling to Rwy 9 NA at night. For uncompensated Baro-VNAV systems, LNAV/VNAV NA below -18°C (0°F) or above 54°C (130°F). DME/DME RNP-0.3 NA. For inop ALS, increase LNAV Cat C/D visibility to 1½ SM.</p>	<p>MALSRL</p>	<p>MISSED APPROACH: Climb to 1200 then climbing left turn to 3000 direct SVM VORTAC and hold.</p>
	<p>AS</p>	

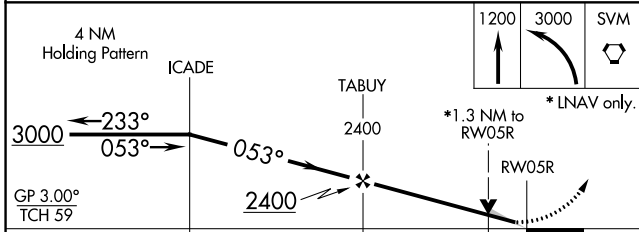
ATIS 127.425	DETROIT APP CON 118.95 284.0	WILLOW RUN TOWER 125.275 256.9	GND CON 119.975
------------------------	--	--	---------------------------



EC-1, 05 NOV 2020 to 03 DEC 2020

EC-1, 05 NOV 2020 to 03 DEC 2020

ELEV 716	D TDZE 716
----------	-------------------



CATEGORY	A	B	C	D
LPV DA	916/18 200 (200-½)			
LNAV/VNAV DA	1055/30 339 (400-¾)			
LNAV MDA	1200/24	484 (500-½)	1200/50	484 (500-1)
C CIRCLING	1220-1	504 (600-1)	1220-1½ 504 (600-1½)	1400-2¼ 684 (700-2¼)

This diagram shows the RWY 5R approach area in detail. It includes the runway, taxiway, and various navigation aids. Key features include:

- Runway 5R and Taxiway 5R.
- Obstacles: 771, 742, 815, 789±, 767±.
- Navigation aids: 7292 X 160, 5995 X 116, 7543 X 150.
- TWR 804.
- 792 obstacle.
- 1.3 NM to RWY 5R.
- 053° to RWY 5R.