

EC-1, 05 NOV 2020 to 03 DEC 2020

DEPARTURE ROUTE DESCRIPTION

**TAKEOFF RUNWAYS 5L/R:** Climb on heading 054° to 1220, then left turn heading 300° for RADAR vectors to cross JWELS at or above 4000, thence...  
**TAKEOFF RUNWAY 9:** Climb on heading 096° to 1220, then left turn heading 300° for RADAR vectors to cross JWELS at or above 4000, thence...  
**TAKEOFF RUNWAYS 23L/R:** Climb on heading 234° or above 4000, thence... heading 234° for RADAR vectors to cross JWELS at or above 4000, thence...  
**TAKEOFF RUNWAY 27:** Climb on heading 276° to 1220, then on heading 276° for RADAR vectors to cross JWELS at or above 4000, thence...  
 ...on track 218° to SNDRS, then on (transition). Maintain ATC assigned altitude, expect filed altitude 10 minutes after departure.

**BGHRT TRANSITION (SNDRS2.BGHRT):**  
**TORRR TRANSITION (SNDRS2.TORRR):**

NOTE: RNAV 1.

NOTE: RADAR required.

NOTE: DME/DME/IRU or GPS required.

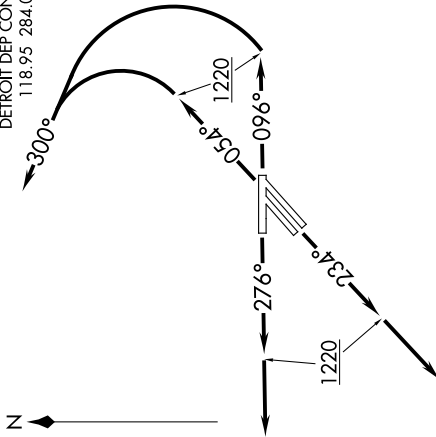
NOTE: Turboprop departures at/above 10000, maintain 280K until advised by ATC.

NOTE: TORRR TRANSITION: For use by KIND and KCVG area arrivals only and flights filed at or below FL220, or as assigned by ATC.

NOTE: If unable to accept 500' per NM climb rate, advise clearance delivery on initial contact.

TOP ALTITUDE: ASSIGNED BY ATC

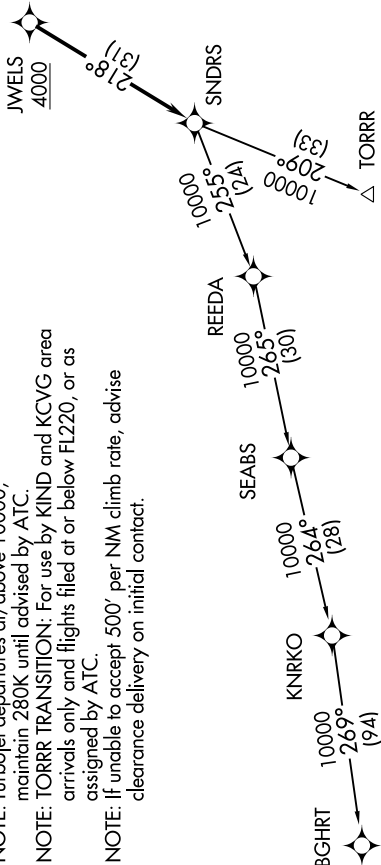
ATIS 127.425  
 GND CON 119.975  
 WILLOW RUN TOWER 125.275, 256.9  
 DETROIT DEP CON 118.95, 284.0



TAKEOFF MINIMUMS:

Rwys 5L/R, 9, 23L/R, 27: Standard with minimum climb of 500' per NM to 1220.

NOTE: Chart not to scale.



EC-1, 05 NOV 2020 to 03 DEC 2020