

ILS or LOC/NDB RWY 13

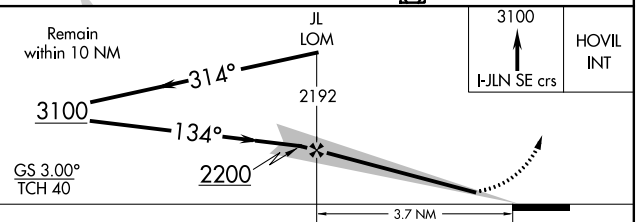
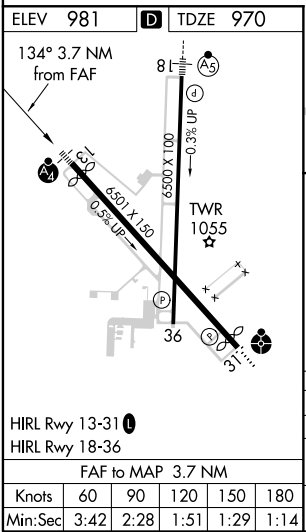
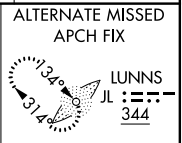
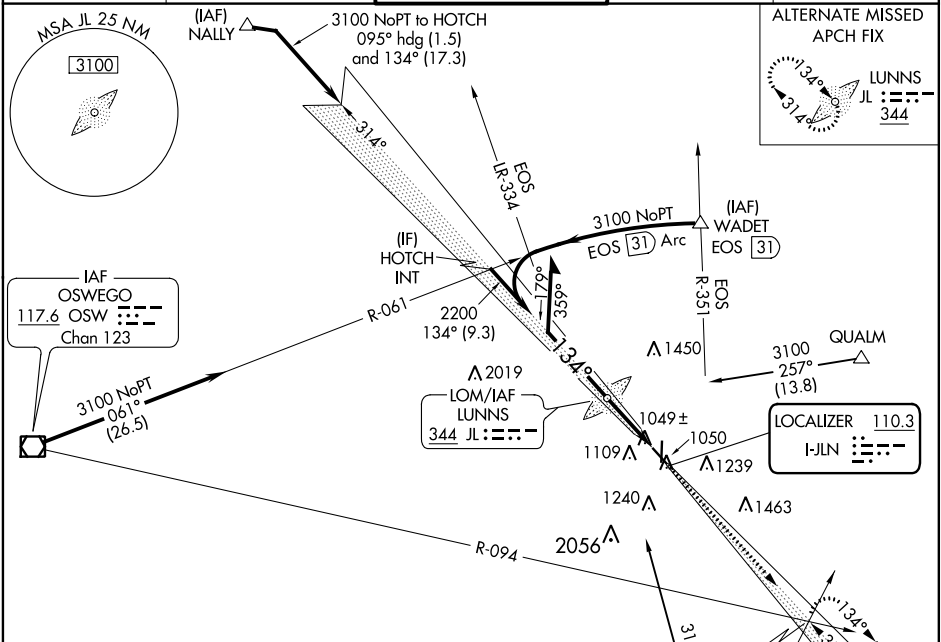
JOPLIN RGNL (JLN)

LOC I-JLN 110.3	APP CRS 134°	Rwy Idg 5813 TDZE 970 Apt Elev 981
---------------------------	------------------------	---

MALSF (NSTD) 1368'.
Circling Rwy 5 NA at night.

MALSF
MISSED APPROACH: Climb to 3100 on I-JLN LOC SE course to HOVIL INT and hold.

ATIS 120.85	KANSAS CITY CENTER 128.6 282.325	JOPLIN TOWER* 119.8 (CTAF) 0	GND CON 121.6	UNICOM 122.95
-----------------------	--	---	-------------------------	-------------------------



CATEGORY	A	B	C	D
S-ILS 13		1170- ³ / ₄	200 (200- ³ / ₄)	
S-LOC 13		1300- ³ / ₄	330 (400- ³ / ₄)	1300-1 330 (400-1)
C CIRCLING	1460-1 479 (500-1)	1500-1 519 (600-1)	1540-1½ 559 (600-1½)	1600-2 619 (700-2)

NC-3, 05 NOV 2020 to 03 DEC 2020

NC-3, 05 NOV 2020 to 03 DEC 2020