

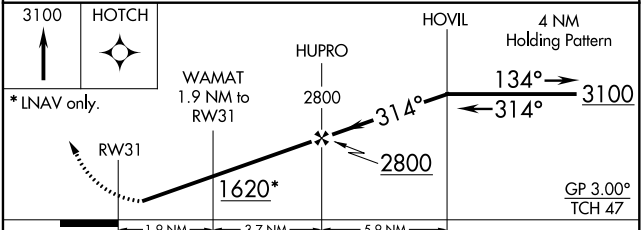
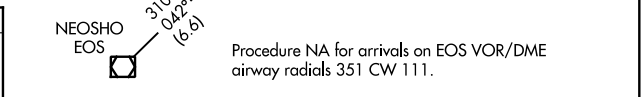
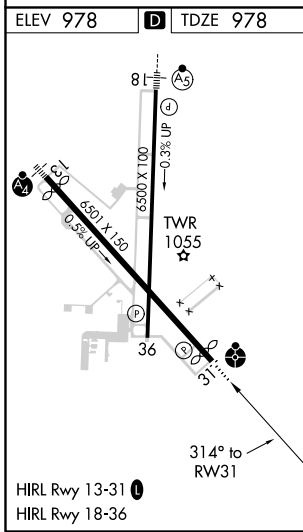
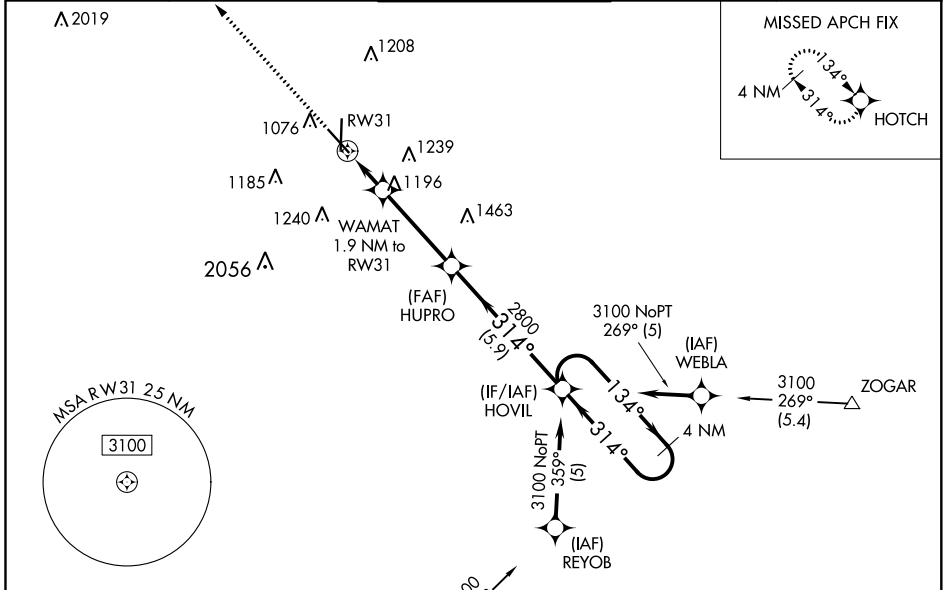
WAAS CH 69334 W31A	APP CRS 314°	Rwy Idg TDZE Apt Elev	5813 978 978
--	------------------------	-----------------------------	---

RNAV (GPS) RWY 31

JOPLIN RGNL (JLN)

RNP APCH.		ODALS	MISSED APPROACH: Climb to 3100 direct HOTCH and hold.
<p>▼ For uncompensated Baro-VNAV systems, LNAV/VNAV NA below -1.6°C (4°F) or above 54°C (130°F). Inoperative table does not apply. Rwy 31 helicopter visibility reduction below ¾ SM NA.</p>			

ATIS 120.85	KANSAS CITY CENTER 128.6 282.325	JOPLIN TOWER* 119.8 (CTAF) 0	GND CON 121.6	UNICOM 122.95
-----------------------	--	---	-------------------------	-------------------------



CATEGORY	A	B	C	D
LPV DA		1229-¾	251 (300-¾)	
LNAV/VNAV DA		1357-1¼	379 (400-1¼)	
LNAV MDA	1500-1	522 (600-1)	1500-1½	522 (600-1½)
C CIRCLING	1500-1	522 (600-1)	1540-1½ 562 (600-1½)	1600-2 622 (700-2)

NC-3, 05 NOV 2020 to 03 DEC 2020

NC-3, 05 NOV 2020 to 03 DEC 2020