

LOC I-GLH 109.1	APP CRS 177°	Rwy ldg TDZE Apt Elev	7981 129 131
---------------------------	------------------------	-----------------------------	---

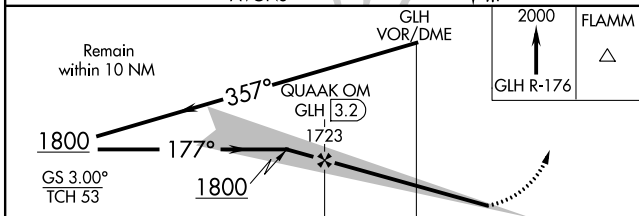
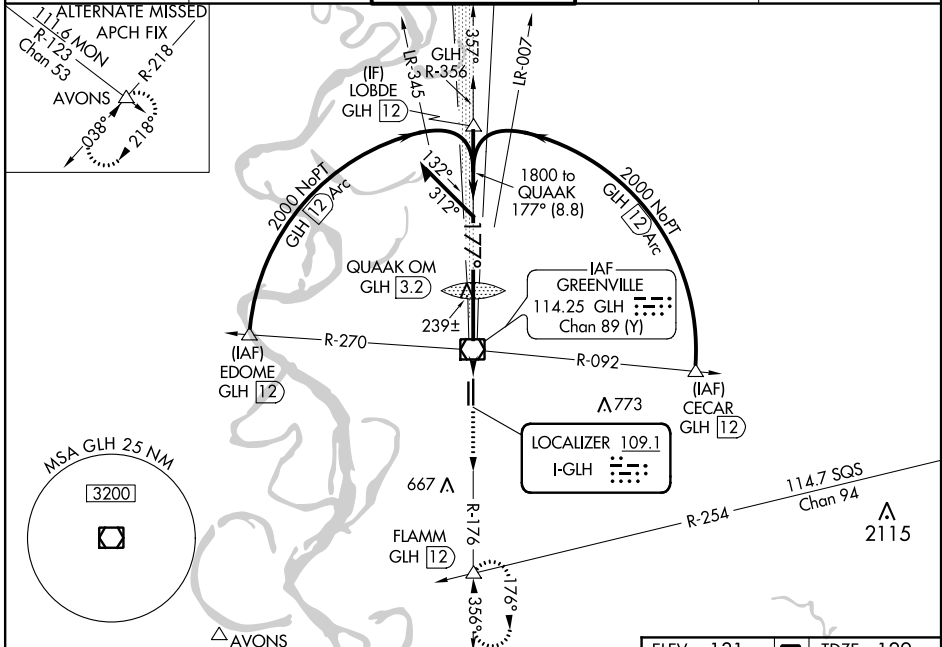
ILS or LOC RWY 18L

GREENVILLE MID-DELTA (GLH)

MALSR MISSED APPROACH: Climb to 2000 on GLH VOR/DME R-176 to FLAMM INT/12 DME and hold.

When local altimeter setting not received, use Greenwood altimeter setting. For inop MAJRS when using Greenwood altimeter setting, increase S-ILS 18L and S-LOC 18L all Coats visibility ½ mile.

ASOS 125.525	MEMPHIS CENTER 135.875 269.35	GREENVILLE TOWER ★ 119.0 (CTAF) 0 256.9	GND CON 121.8 256.9	UNICOM 122.95
------------------------	---	--	-------------------------------	-------------------------



ELEV 131	TDZE 129
----------	----------

177° 4.8 NM from FAF

REIL Rwy 36R
MIRL Rwy 18R-36L
HIRL Rwy 18L-36R

8000' x 1.50

7019' x 1.50

298'

36L 36R

FAF to MAP 4.8 NM					
Knots	60	90	120	150	180
Min:Sec	4:48	3:12	2:24	1:55	1:36

CATEGORY	A	B	C	D
S-ILS 18L	329/24		200 (200-½)	
S-LOC 18L	500/24		371 (400-½)	
CIRCLING	600-1		600-1½	
	469 (500-1)		469 (500-1½)	
GREENWOOD ALTIMETER SETTING MINIMUMS				
S-ILS 18L	529/40		400 (400-¾)	
S-LOC 18L	700/40		700/50	
	571 (600-¾)		571 (600-1)	
CIRCLING	800-1¼		800-2	
	669 (700-1¼)		669 (700-2)	

SC-4, 05 NOV 2020 to 03 DEC 2020

SC-4, 05 NOV 2020 to 03 DEC 2020