

WAAS CH <b>97411</b> <b>W18A</b>	APP CRS <b>177°</b>	Rwy Idg <b>7981</b> TDZE <b>129</b> Apt Elev <b>131</b>
--	------------------------	---

# RNAV (GPS) RWY 18L

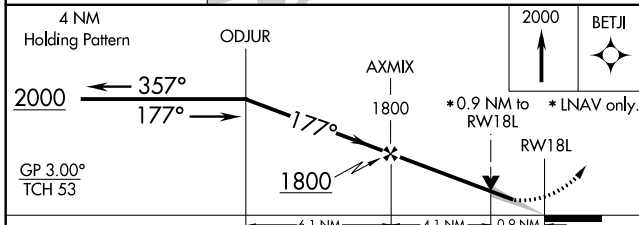
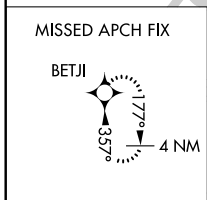
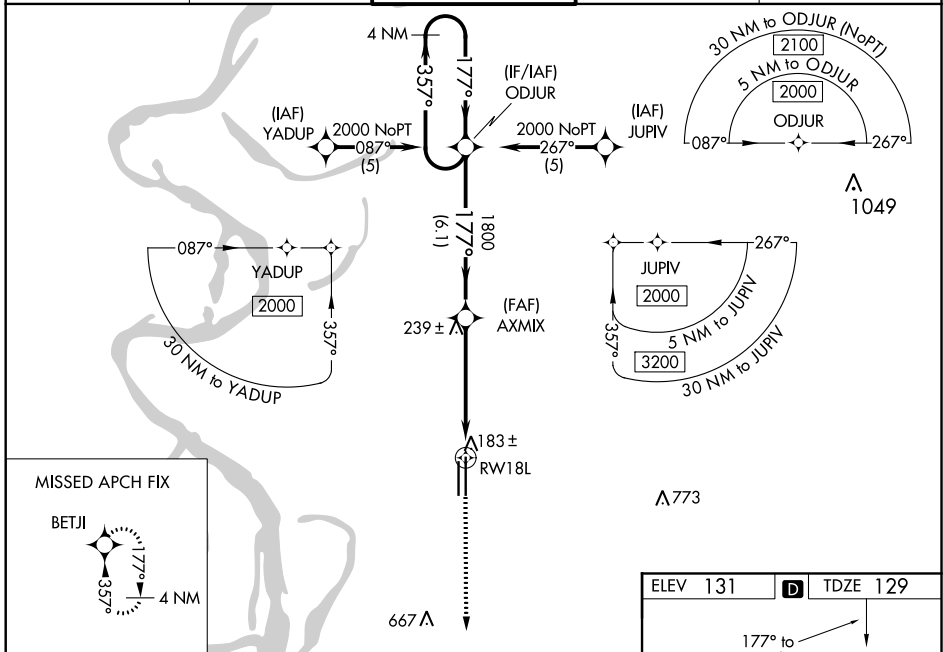
GREENVILLE MID-DELTA (GLH)

**⚠** For uncompensated Baro-VNAV systems, LNAV/VNAV NA below -15°C (5°F) or above 54°C (130°F). Inop table does not apply to LNAV Cat D. DME/DME RNP-0.3 NA. When local altimeter setting not received, use Greenwood altimeter setting and increase LPV DA to 437, LNAV/VNAV DA to 347, increase all MDA 120 feet, increase LNAV/VNAV Cats A, B, and C visibility ½ mile, Cat D visibility ¼ mile, increase LNAV Cat C visibility ¼ mile, and increase Circling Cat D visibility ¼ mile. VDP and Baro-VNAV NA when using Greenwood altimeter setting. For inop MALSRS, increase LNAV/VNAV visibility all Cats to RVR 5000. For inop MALSRS when using Greenwood altimeter setting, increase LPV visibility all Cats to RVR 5000.

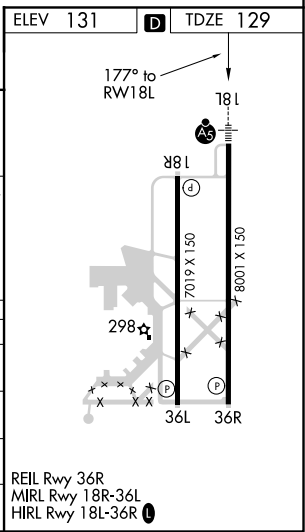


**MISSED APPROACH:**  
Climb to 2000 direct BETJI and hold.

ASOS <b>125.525</b>	MEMPHIS CENTER <b>135.875 269.35</b>	<b>GREENVILLE TOWER*</b> <b>119.0 (CTAF) 256.9</b>	GND CON <b>121.8 256.9</b>	UNICOM <b>122.95</b>
------------------------	---	---	-------------------------------	-------------------------



CATEGORY	A	B	C	D
LPV DA	329/24 200 (200-½)			
LNAV/VNAV DA	439/24	310 (400-½)	439/40 310 (400-¾)	
LNAV MDA	460/24	331 (400-½)	460/50 331 (400-1)	
CIRCLING	600-1	469 (500-1)	600-1½ 469 (500-1½)	700-2 569 (600-2)



SC-4, 05 NOV 2020 to 03 DEC 2020

SC-4, 05 NOV 2020 to 03 DEC 2020