

WAAS CH <b>77611</b> <b>W36A</b>	APP CRS <b>357°</b>	Rwy Idg <b>7019</b> TDZE <b>130</b> Apt Elev <b>131</b>
--	------------------------	---

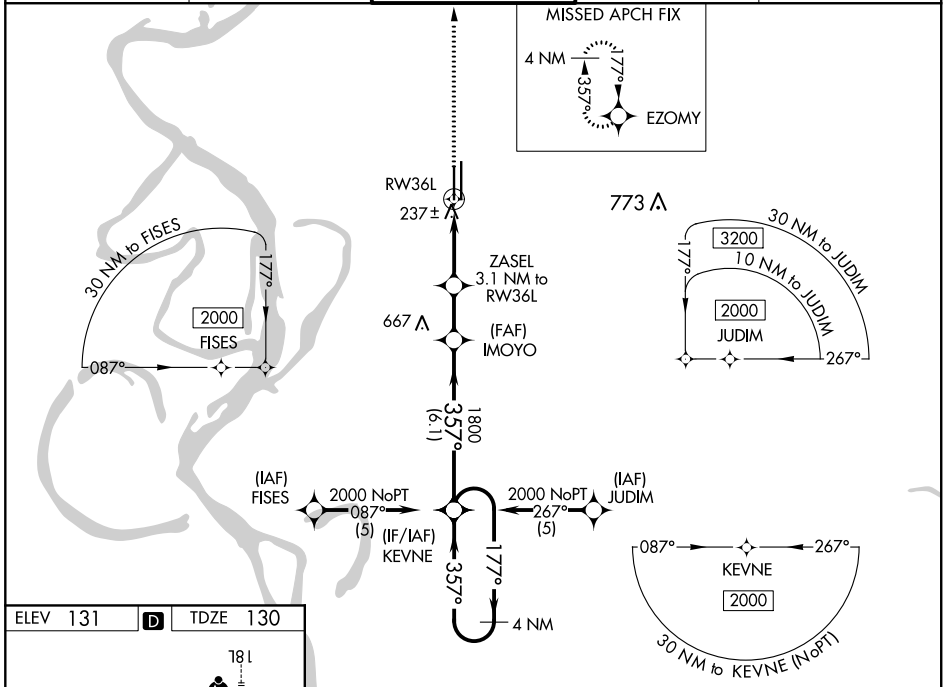
# RNAV (GPS) RWY 36L

GREENVILLE MID-DELTA (GLH)

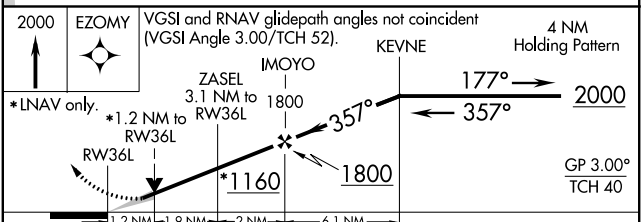
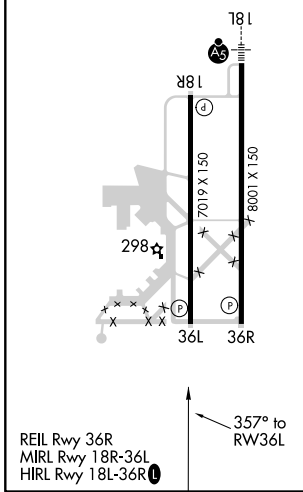
**⚠** For uncompensated Baro-VNAV systems, LNAV/VNAV NA below -15°C (5°F) or above 54°C (130°F).  
**⚠** DME/DME RNP-0.3 NA. When local altimeter setting not received, use Greenwood altimeter setting and increase LPV DA to 575, increase LNAV/VNAV DA to 620, increase all MDA 120 feet, increase LPV visibility all Cats ¼ mile, increase LNAV/VNAV visibility all Cats ½ mile, increase LNAV Cat C visibility ¼ mile, LNAV Cat D visibility ½ mile, and increase Circling Cat D visibility ¼ mile. VDP and Baro-VNAV NA when using Greenwood altimeter setting.

**MISSED APPROACH:**  
Climb to 2000 direct EZOMY and hold.

ASOS <b>125.525</b>	MEMPHIS CENTER <b>135.875 269.35</b>	<b>GREENVILLE TOWER ★</b> <b>119.0 (CTAF) 0 256.9</b>	GND CON <b>121.8 256.9</b>	UNICOM <b>122.95</b>
------------------------	---	--	-------------------------------	-------------------------



ELEV <b>131</b>	<b>D</b>	TDZE <b>130</b>
-----------------	----------	-----------------



CATEGORY	A	B	C	D
LPV DA	467-1¼ 337 (400-1¼)			
LNAV/VNAV DA	512-1¼ 382 (400-1¼)			
LNAV MDA	540-1 410 (500-1)	540-1¼ 410 (500-1¼)		
CIRCLING	600-1 469 (500-1)	600-1½ 469 (500-1½)	700-2 569 (600-2)	

SC-4, 05 NOV 2020 to 03 DEC 2020

SC-4, 05 NOV 2020 to 03 DEC 2020