


LOC/DME I-TVI 110.1 Chan 38	APP CRS 225°	Rwy Idg TDZE Apt Elev	5504 242 264
-------------------------------------------------	------------------------	-----------------------------	-----------------------------------------

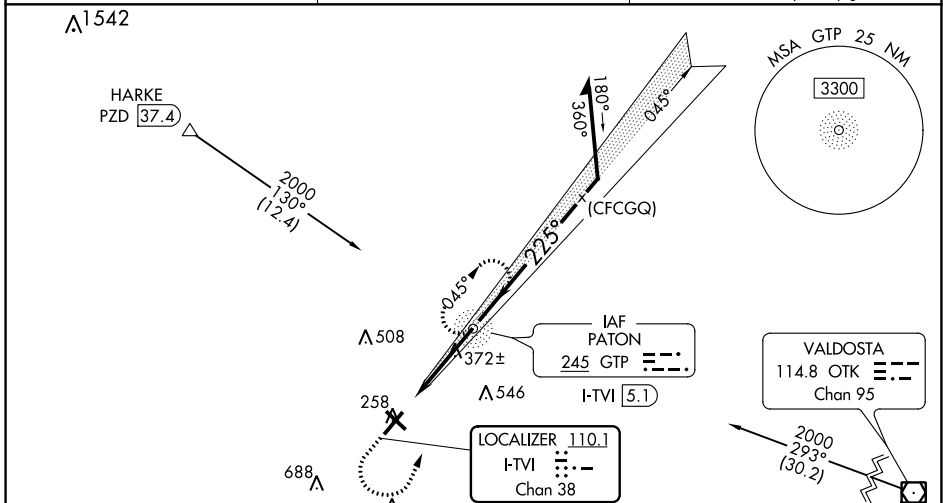
ILS or LOC RWY 22

THOMASVILLE RGNL (TVI)

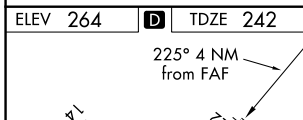
ADF REQUIRED. VDP NA with Valdosta altimeter setting. When local altimeter setting not received, use Valdosta altimeter setting and increase DA to 683 feet and all MDA 100 feet. Increase S-ILS 22 all Cats visibility $\frac{3}{8}$ SM, increase S-LOC 22 and Circling Cats C/D visibility $\frac{1}{4}$ SM. For inop ALS, increase S-ILS 22 all Cats, and S-LOC 22 Cat D visibility to $1\frac{1}{8}$ SM. For inop ALS when using Valdosta altimeter setting, increase S-ILS 22 all Cats visibility to $1\frac{1}{2}$ SM and increase S-LOC 22 Cat D visibility to $1\frac{3}{8}$ SM. Circling Rwy 4, 14, 32 NA at night.

MALSIF

MISSED APPROACH:
 Climb to 900 then climbing left turn to 2000 direct GTP NDB and hold.

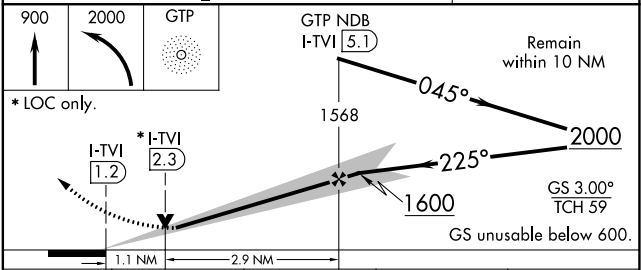
AWOS-3PT 119.175	VALDOSTA APP CON* 126.6 285.6	UNICOM 123.075 (CTAF)
----------------------------	-----------------------------------------	---------------------------------



ADF REQUIRED



ELEV 264	TDZE 242
LIRL Rwy 14-32 HIRL Rwy 4-22	
FAF to MAP 4 NM	
Knots	60 90 120 150 180
Min:Sec	4:00 2:40 2:00 1:36 1:20



CATEGORY	A	B	C	D
S-ILS 22	600- $\frac{7}{8}$ 358 (400- $\frac{7}{8}$)			
S-LOC 22	640- $\frac{3}{4}$ 398 (400- $\frac{3}{4}$)	640- $\frac{7}{8}$ 398 (400- $\frac{7}{8}$)		
<input checked="" type="checkbox"/> CIRCLING	700-1 436 (500-1)	800-1 536 (600-1)	900-1 $\frac{3}{4}$ 636 (700-1 $\frac{3}{4}$)	1040-2 $\frac{1}{2}$ 776 (800-2 $\frac{1}{2}$)

SE-4, 05 NOV 2020 to 03 DEC 2020

SE-4, 05 NOV 2020 to 03 DEC 2020