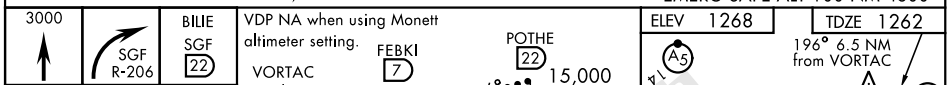
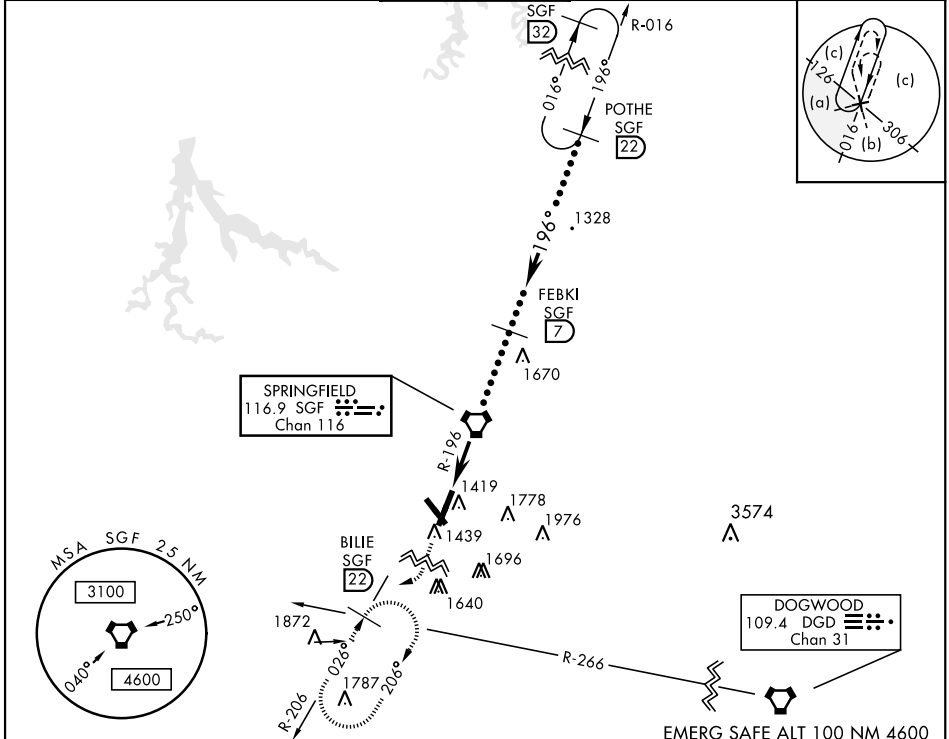


VORTAC SGF 116.9 Chan 116	APCH CRS 196°	Rwy Idg 7003 TDZE 1262 Arprt Elev 1268	JAL-604 [USAF]	SPRINGFIELD-BRANSON NATIONAL (KSGF)
---------------------------------	------------------	---	----------------	-------------------------------------

When local altimeter setting not received, use Monett altimeter setting. MALS (A4) MISSED APPROACH: Climb to 3000 then right turn via SGF VORTAC R-206 to BILIE INT/SGF 22 DME and hold.

ATIS 135.125	SPRINGFIELD APP CON 121.1 290.5	SPRINGFIELD TOWER 119.9 257.8	GND CON 121.9 251.15	CLNC DEL 123.675
-----------------	------------------------------------	----------------------------------	-------------------------	---------------------



CATEGORY	C	D	E
	1760-1¼ 498 (500-1¼)	1760-1½ 498 (500-1½)	1760-1¾ 498 (500-1¾)
CIRCLING	1820-1½ 552 (600-1½)	1820-2 552 (600-2)	1920-2¼ 652 (700-2¼)
	MONETT ALTIMETER SETTING MINIMUMS		
S-20	1860-1½ 598 (600-1½)	1860-1¾ 598 (600-1¾)	1860-2 598 (600-2)
	1920-1¾ 652 (700-1¾)	1920-2¾ 652 (700-2¾)	2020-2¾ 752 (800-2¾)
CIRCLING	1860-1½ 598 (600-1½)	1860-1¾ 598 (600-1¾)	1860-2 598 (600-2)
	1920-1¾ 652 (700-1¾)	1920-2¾ 652 (700-2¾)	2020-2¾ 752 (800-2¾)

NC-3, 05 NOV 2020 to 03 DEC 2020

NC-3, 05 NOV 2020 to 03 DEC 2020