

| | | | |
|--|------------------------|-----------------------------|---|
| WAAS CH 72933 W32A | APP CRS 319° | Rwy Idg TDZE Apt Elev | 8000 1268 1268 |
|--|------------------------|-----------------------------|---|

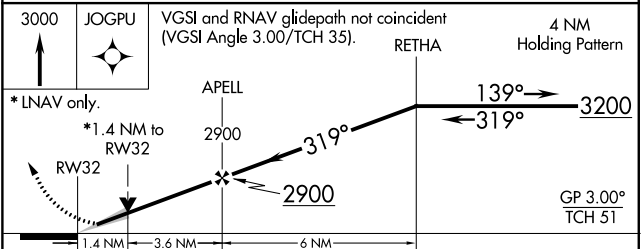
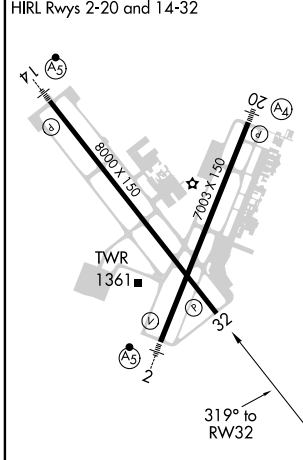
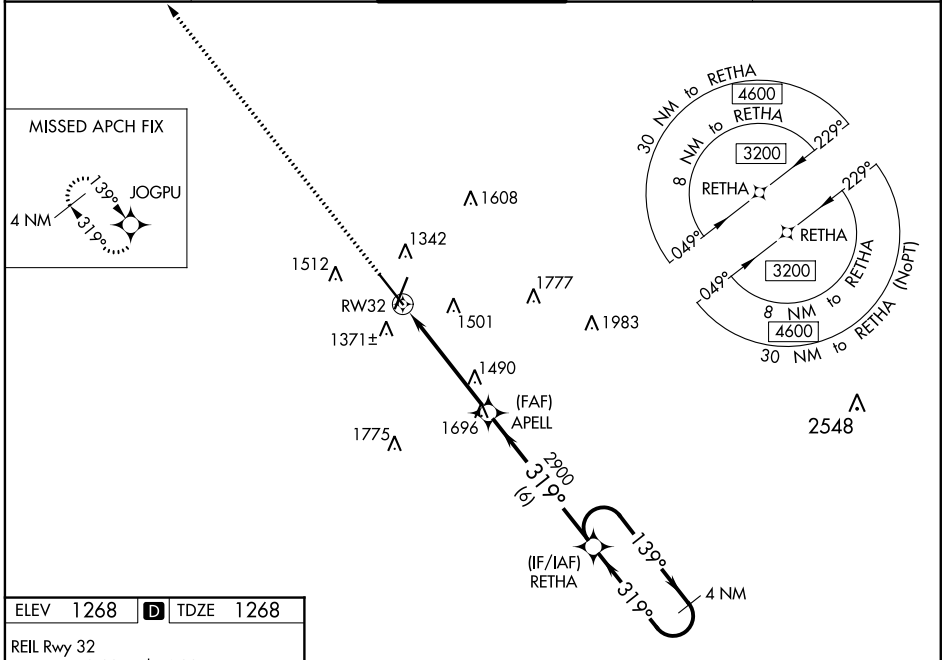
RNAV (GPS) RWY 32

SPRINGFIELD-BRANSON NATIONAL (SGF)

⚠ Baro-VNAV and VDP NA when using Monett altimeter setting. For uncompensated Baro-VNAV systems, LNAV/VNAV NA below -16°C (4°F) or above 54°C (130°F). When local altimeter setting not received, use Monett altimeter setting and increase all DA 90 feet and all MDA 100 feet; increase LPV all Cats visibility 1/8 mile, LNAV/VNAV all Cats 3/8 mile, LNAV Cats C and D 1/4 mile and Circling Cat C 1/4 mile and Cat D 1/2 mile. DME/DME RNP- 0.3 NA.

⚠ MISSED APPROACH: Climb to 3000 direct JOGPU and hold.

| | | | | |
|------------------------|---|---|--------------------------------|----------------------------|
| ATIS 135.125 | SPRINGFIELD APP CON 121.1 290.5 | SPRINGFIELD TOWER 119.9 257.8 | GND CON 121.9 251.15 | CLNC DEL 123.675 |
|------------------------|---|---|--------------------------------|----------------------------|



| CATEGORY | A | B | C | D |
|-------------------|-----------------------|-----------------------|-------------------------|-----------------------|
| LPV DA | | 1518-1 | 250 (300-1) | |
| LNAV/VNAV DA | | 1660-1¼ | 392 (400-1¼) | |
| LNAV MDA | 1740-1 | 472 (500-1) | 1740-1⅔ | 472 (500-1⅔) |
| C CIRCLING | 1760-1 492 (500-1) | 1820-1 552 (600-1) | 1820-1½ 552 (600-1½) | 1920-2 652 (700-2) |

NC-3, 05 NOV 2020 to 03 DEC 2020

NC-3, 05 NOV 2020 to 03 DEC 2020