

WAAS CH 97616 W08A	APP CRS 084°	Rwy Idg TDZE Apt Elev	5957 1712 1716
--	------------------------	-----------------------------	---

RNAV (GPS) RWY 8

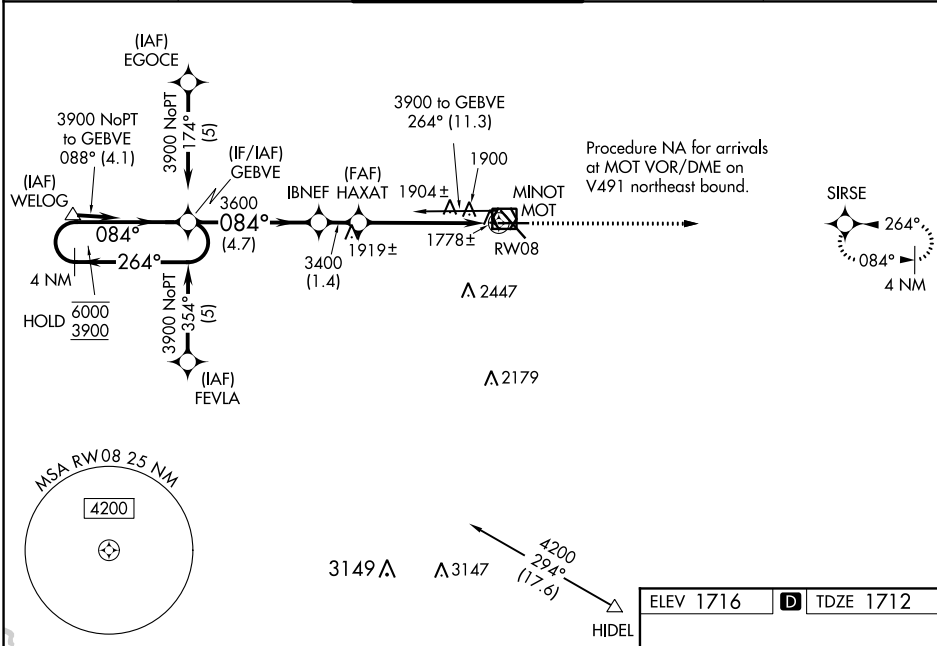
MINOT INTL (MOT)

RNP APCH.

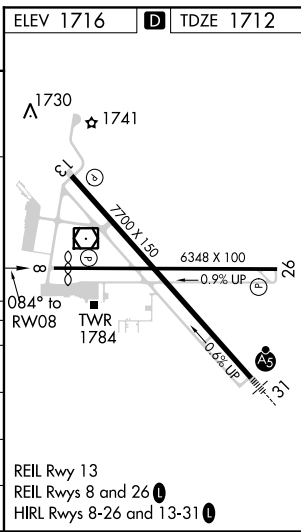
▽ Rwy 8 helicopter visibility reduction below 3/4 SM NA.
▲ For uncompensated Baro-VNAV systems, LNAV/VNAV NA below -18°C or above 54°C.

MISSED APPROACH:
Climb to 3600 direct SIRSE and hold.

ASOS 118.725	MINOT APP CON * 119.6 363.8	MAGIC CITY TOWER * 118.2 (CTAF) 0 251.125	GND CON 121.9	UNICOM 122.95
------------------------	---------------------------------------	---	-------------------------	-------------------------



4 NM Holding Pattern		VGSi and RNAV glidepath not coincident (VGSi Angle 3.00/TCH 45).		3600 SIRSE
6000 ← 264°	3900 → 084°	3600	3400	*1.3 NM to RWY 08
GP 3.00°	TCH 49	4.7 NM	1.4 NM	3.8 NM
CATEGORY	A	B	C	D
LPV DA	1991-1 279 (300-1)			
LNAV/VNAV DA	2218-1 3/4 506 (600-1 3/4)			
LNAV MDA	2160-1	448 (500-1)	2160-1 3/8 448 (500-1 3/8)	2160-1 1/2 448 (500-1 1/2)
CIRCLING	2200-1	484 (500-1)	2280-1 1/2 564 (600-1 1/2)	2280-2 564 (600-2)



NC-1, 05 NOV 2020 to 03 DEC 2020

NC-1, 05 NOV 2020 to 03 DEC 2020