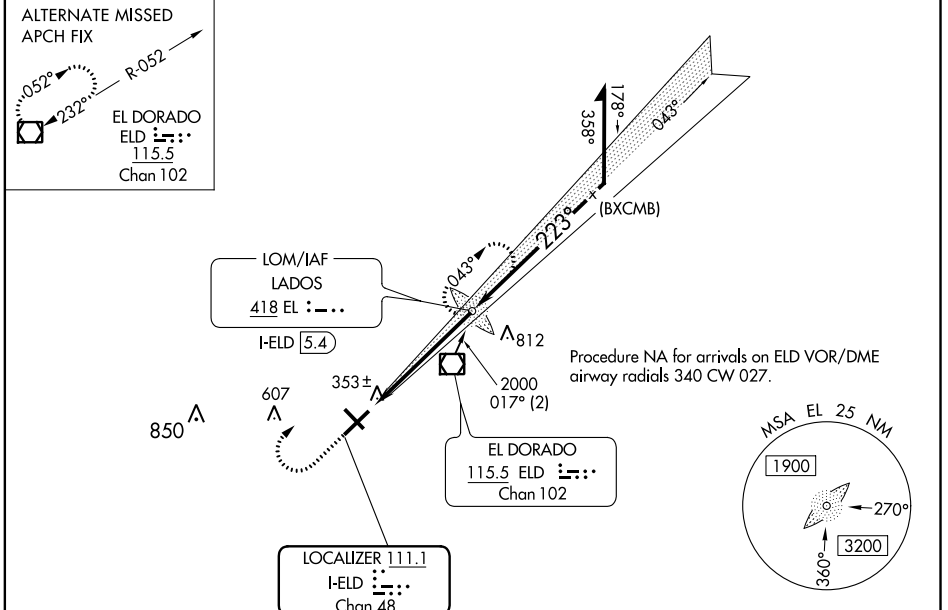


LOC/DME I-ELD 111.1 Chan 48	APP CRS 223°	Rwy Idg 6601 TDZE 259 Apt Elev 277
---	------------------------	---

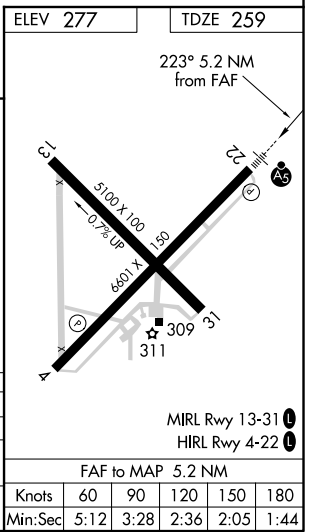
ILS or LOC RWY 22

SOUTH ARKANSAS RGNL AT GOODWIN FIELD (ELD)

ADF required.		MALSR 	MISSED APPROACH: Climb to 1200 then climbing right turn to 2000 direct LADOS LOM and hold.
ASOS 118,325	FORT WORTH CENTER 128.2 269.1	UNICOM 123.0 (CTAF)	



1200	2000	EL	VGSI and ILS glidepath not coincident (VGSI Angle 3.00/TCH 53).			
*LOC only.			Remain within 10 NM			
I-ELD 0.2	I-ELD 1.2	EL LOM I-ELD 5.4	1988	043°	2000	GS 3.00° TCH 50
1 NM		4.2 NM				
CATEGORY	A	B	C	D		
S-ILS 22	459-1/2		200 (200-1/2)			
S-LOC 22	620-1/2		361 (400-1/2)		620-3/4 361 (400-3/4)	
CIRCLING	740-1 463 (500-1)		740-1 1/2 463 (500-1 1/2)		840-2 563 (600-2)	



SC-1, 05 NOV 2020 to 03 DEC 2020

SC-1, 05 NOV 2020 to 03 DEC 2020