

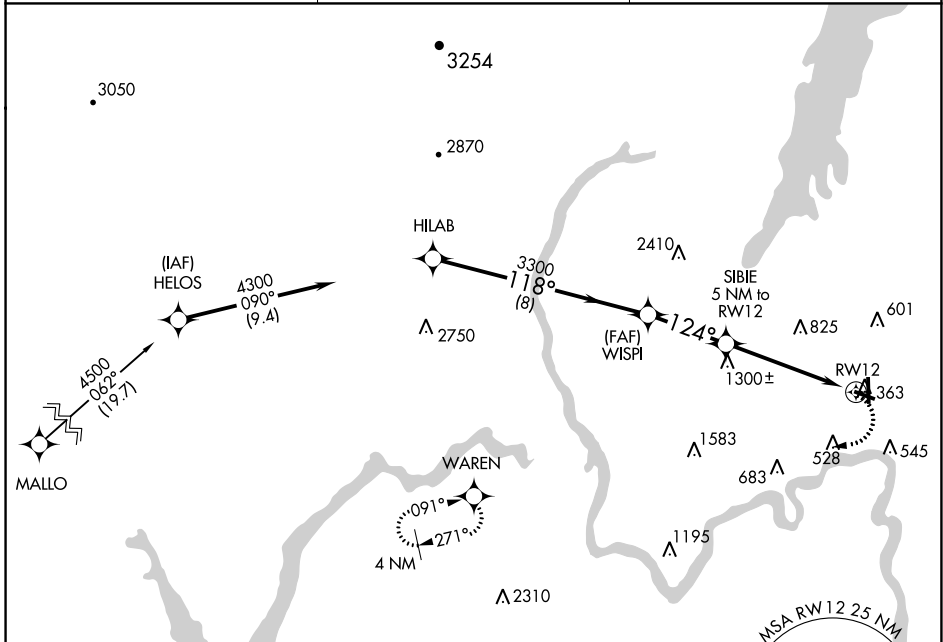
APP CRS	Rwy Idg	3999
124°	TDZE	328
	Apt Elev	328

RNAV (GPS) RWY 12

FLOYD BENNETT MEMORIAL (GFL)

NA -18°C	DME/DME RNP-0.3 NA. Helicopter visibility reduction below 1 SM NA. Night landing: Rwy 12, 30 NA.	MISSED APPROACH: Climbing right turn to 4000 direct to WARREN WP and hold.
-------------	--	--

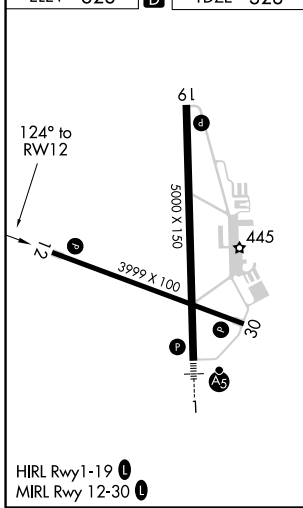
ASOS 119.925	ALBANY APP CON 132.825 307.2	UNICOM 123.0 (CTAF)
------------------------	--	-------------------------------



NE-2, 05 NOV 2020 to 03 DEC 2020

NE-2, 05 NOV 2020 to 03 DEC 2020

ELEV 328		TDZE 328
----------	--	----------



GLENS FALLS, NEW YORK
 Orig-A 10DEC15

HILAB Procedure Turn NA 4300 118° 3300 124° 2200 3.47° TCH 45 8 NM 3 NM 5 NM	VGSI and descent angles not coincident (VGSI Angle 3.85/TCH 55). 4000 WARREN			
	SIBIE 5 NM to RWY 12 RWY 12			
CATEGORY	A	B	C	D
LNAV MDA	1560-1¼ 1232 (1300-1¼)	1560-1½ 1232 (1300-1½)	1560-3	1232 (1300-3)
CIRCLING	1560-1¼ 1232 (1300-1¼)	1560-1½ 1232 (1300-1½)	1560-3	1232 (1300-3)

43°20'N-73°37'W

FLOYD BENNETT MEMORIAL (GFL)
RNAV (GPS) RWY 12