

# AIRPORT DIAGRAM

AL-780 (FAA)

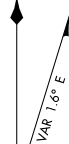
KANSAS CITY INTL (MCI)  
KANSAS CITY, MISSOURI

D-ATIS  
128.375  
INTERNATIONAL TOWER  
128.2 254.25  
GND CON  
121.8  
CLNC DEL  
135.7  
CPDLC

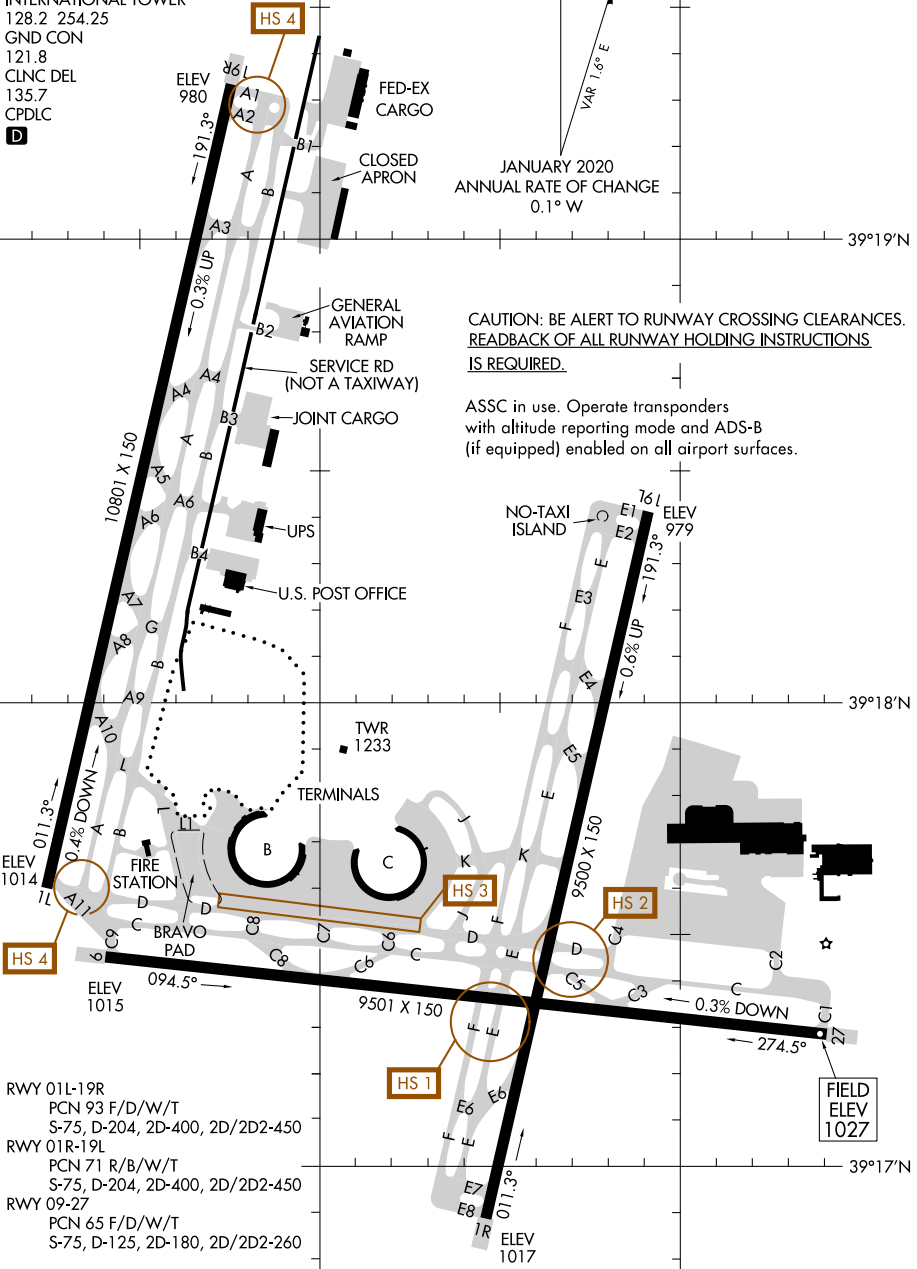
**D**

94°43'W

94°42'W



JANUARY 2020  
ANNUAL RATE OF CHANGE  
0.1° W



CAUTION: BE ALERT TO RUNWAY CROSSING CLEARANCES.  
READBACK OF ALL RUNWAY HOLDING INSTRUCTIONS IS REQUIRED.

ASSC in use. Operate transponders with altitude reporting mode and ADS-B (if equipped) enabled on all airport surfaces.

NC-3, 05 NOV 2020 to 03 DEC 2020

NC-3, 05 NOV 2020 to 03 DEC 2020

RWY 01L-19R  
PCN 93 F/D/W/T  
S-75, D-204, 2D-400, 2D/2D2-450

RWY 01R-19L  
PCN 71 R/B/W/T  
S-75, D-204, 2D-400, 2D/2D2-450

RWY 09-27  
PCN 65 F/D/W/T  
S-75, D-125, 2D-180, 2D/2D2-260

# AIRPORT DIAGRAM

KANSAS CITY, MISSOURI  
KANSAS CITY INTL (MCI)