

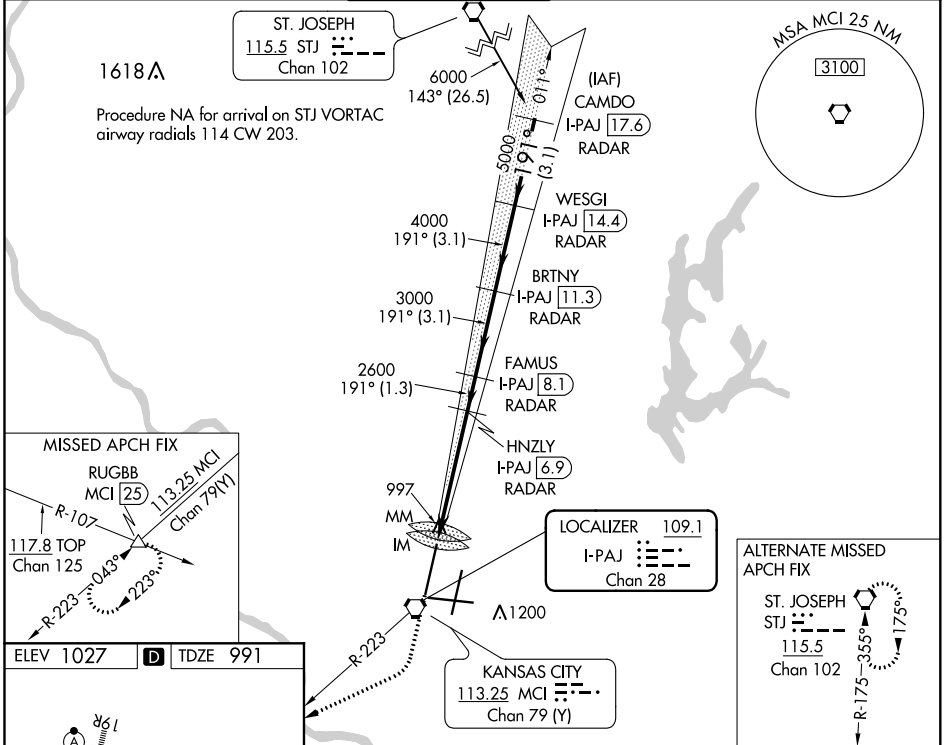
LOC/DME I-PAJ <b>109.1</b> Chan 28	APP CRS <b>191°</b>	Rwy Idg <b>10801</b> TDZE <b>991</b> Apt Elev <b>1027</b>
--	------------------------	---

# ILS RWY 19R (SA CAT I)

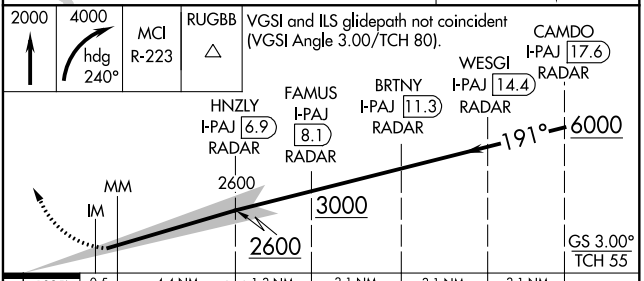
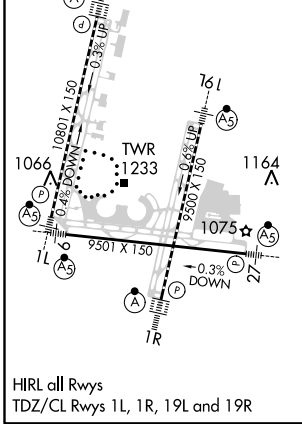
KANSAS CITY INTL (MCI)

DME or RADAR required.	ALSIF-2	MISSED APPROACH: Climb to 2000 then climbing right turn to 4000 on heading 240° and on MCI VORTAC R-223 to RUGBB INT/MCI 25 DME and hold.
<p>Simultaneous approach authorized. Requires specific OPSPEC, MSPEC, or LOA approval and use of HUD to DH.</p>		

D-ATIS <b>128.375</b>	KANSAS CITY APP CON <b>120.95 318.1</b>	INTERNATIONAL TOWER <b>128.2 254.25</b>	GND CON <b>121.8</b>	CLNC DEL <b>135.7</b>	CPDLC
--------------------------	--	--	-------------------------	--------------------------	-------



ELEV 1027	D	TDZE 991
-----------	---	----------



CATEGORY	A	B	C	D
S-ILS 19R	RA 135/14 150 DA 1141			

**SA CATEGORY I ILS - SPECIAL AIRCREW & AIRCRAFT CERTIFICATION REQUIRED**

NC-3, 05 NOV 2020 to 03 DEC 2020

NC-3, 05 NOV 2020 to 03 DEC 2020