

LOC/DME I-PVL <b>110.75</b> Chan 44 (Y)	APP CRS <b>011°</b>	Rwy Idg TDZE Apt Elev <b>9500</b> <b>1017</b> <b>1026</b>
-----------------------------------------------	------------------------	--------------------------------------------------------------------------

# ILS RWY 1R (CAT II & III)

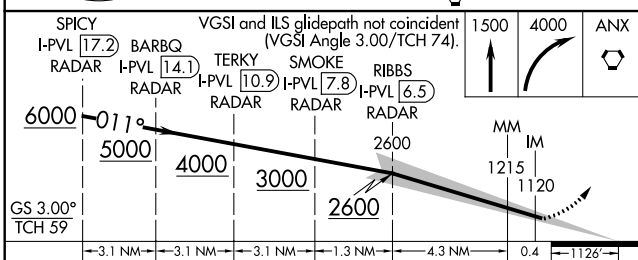
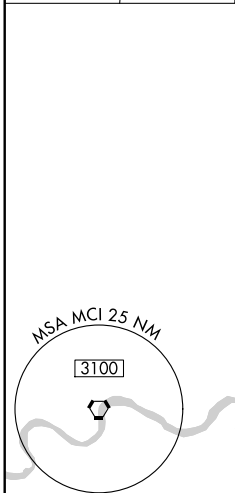
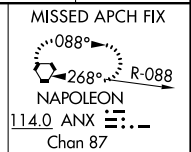
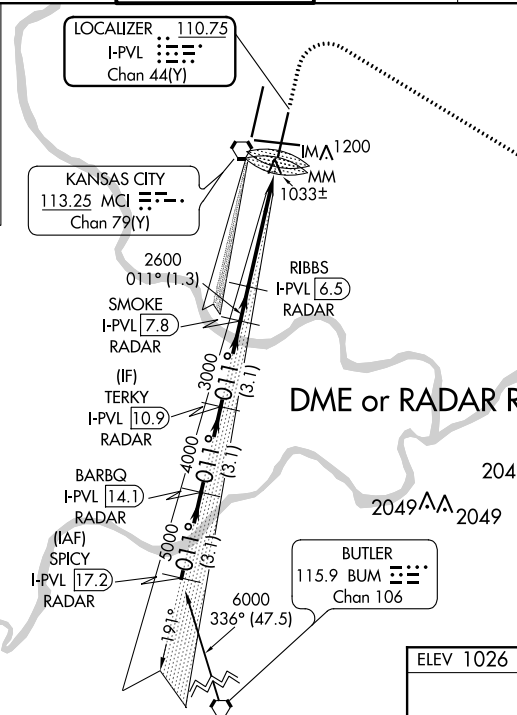
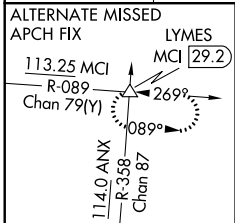
KANSAS CITY INTL (MCI)

Simultaneous approach authorized with Rwy 1L. DME or RADAR required. CAT II: RVR 1000 authorized with specific OPSPEC, MSPEC, or LOA approval and use of Autoland or HUD to touchdown.

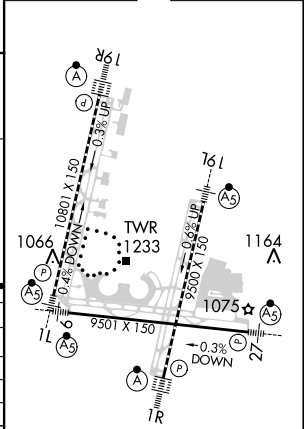
ALSIF-2

MISSED APPROACH: Climb to 1500 then climbing right turn to 4000 direct ANX VORTAC and hold.

D-ATIS <b>128.375</b>	KANSAS CITY APP CON <b>120.95 318.1</b>	INTERNATIONAL TOWER <b>128.2 254.25</b>	GND CON <b>121.8</b>	CLNC DEL <b>135.7</b>	CPDLC
--------------------------	--------------------------------------------	--------------------------------------------	-------------------------	--------------------------	-------



ELEV 1026	<b>D</b> TDZE 1017
-----------	--------------------



CATEGORY	A	B	C	D
S-ILS 1R	CAT II RA 111/12 100 DA 1117			
S-ILS 1R	CAT IIIa RVR 07			
S-ILS 1R	CAT IIIb RVR 06			
S-ILS 1R	CAT IIIc NA			

## CATEGORY II & III ILS - SPECIAL AIRCREW & AIRCRAFT CERTIFICATION REQUIRED

HIRL all Rwys  
TDZ/CL Rwys 1L, 1R, 19L and 19R

NC-3, 05 NOV 2020 to 03 DEC 2020

NC-3, 05 NOV 2020 to 03 DEC 2020