

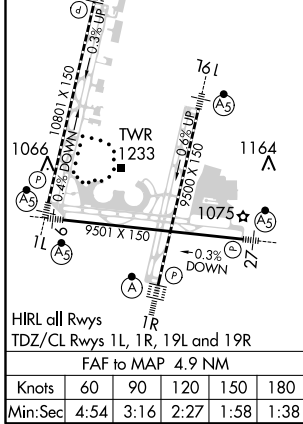
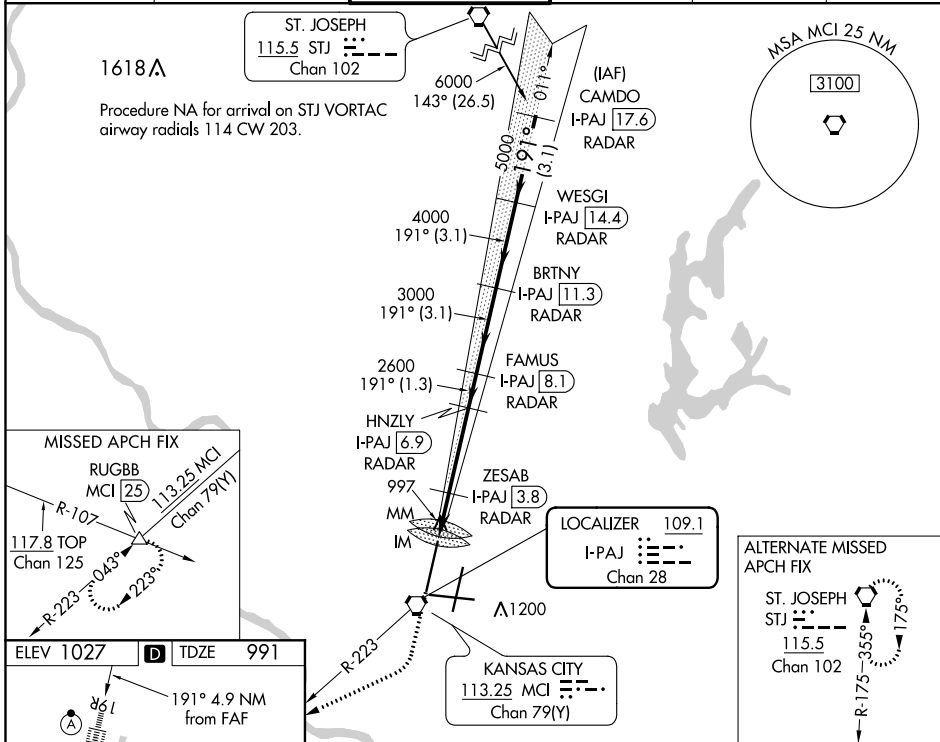
LOC/DME I-PAJ 109.1 Chan 28	APP CRS 191°	Rwy Idg 10801 TDZE 991 Apt Elev 1027
--	------------------------	---

I LS or LOC RWY 19R

KANSAS CITY INTL (MCI)

DME or RADAR required.		ALSIF-2	MISSED APPROACH: Climb to 2000 then climbing right turn to 4000 on heading 240° and on MCI VORTAC R-223 to RUGBB INT/MCI 25 DME and hold.		
<p>Simultaneous approach authorized. For inop ALS, increase S-ILS 19R Cat E visibility to RVR 4000 and S-LOC 19R Cat C/D/E to RVR 4500.</p>					

D-ATIS 128.375	KANSAS CITY APP CON 120.95 318.1	INTERNATIONAL TOWER 128.2 254.25	GND CON 121.8	CLNC DEL 135.7	CPDLC
--------------------------	--	--	-------------------------	--------------------------	-------



2000	4000	MCI R-223	RUGBB	VGSI and ILS glidepath not coincident (VGSI Angle 3.00/TCH 80).		CAMDO I-PAJ [17.6] RADAR
*LOC only.		ZESAB I-PAJ [3.8] RADAR	HNZLY I-PAJ [6.9] RADAR	FAMUS I-PAJ [8.1] RADAR	BRTNY I-PAJ [11.3] RADAR	WESGI I-PAJ [14.4] RADAR
I-PAJ [2]	I-PAJ [2.7]	I-PAJ [3.8]	I-PAJ [6.9]	I-PAJ [8.1]	I-PAJ [11.3]	I-PAJ [14.4]
0.2	0.3	1.1	3.1	3.1	3.1	3.1
CATEGORY		A	B	C	D	E
S-ILS 19R		1191/18 200 (200-1/2)				
S-LOC 19R		1280/24 289 (300-1/2)		1280/40 289 (300-3/4)		
CIRCLING		1540-1 513 (600-1)		1540-1 1/2 513 (600-1 1/2)		1580-2 553 (600-2)

NC-3, 05 NOV 2020 to 03 DEC 2020

NC-3, 05 NOV 2020 to 03 DEC 2020