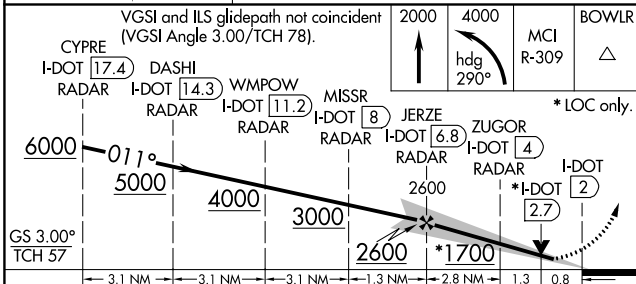
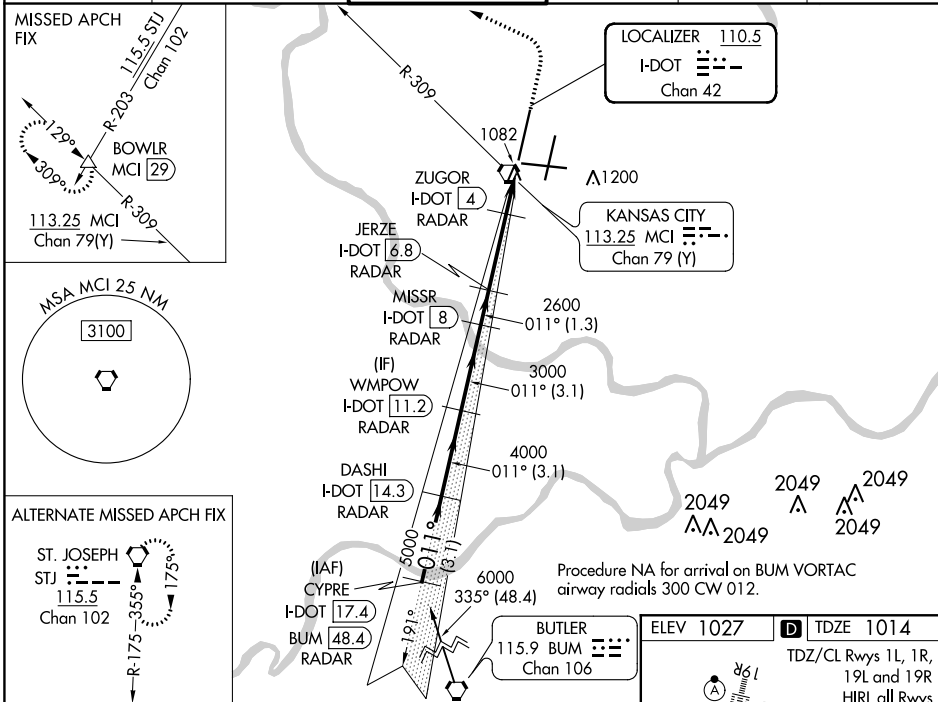


LOC/DME I-DOT 110.5 Chan 42	APP CRS 011°	Rwy Idg TDZE Apt Elev	10801 1014 1027
---	------------------------	-----------------------------	--

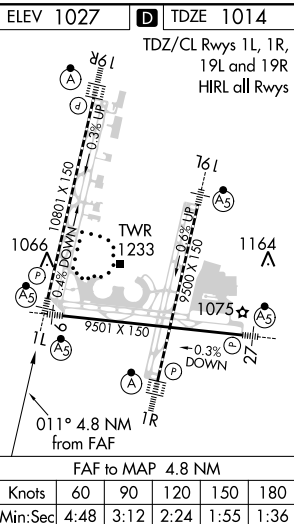
ILS or LOC RWY 1L

KANSAS CITY INTL (MCI)

DME or RADAR required.		MALSR 	MISSED APPROACH: Climb to 2000 then climbing left turn to 4000 on heading 290° and MCI VORTAC R-309 to BOWLR INT/MCI 29 DME and hold.				
▼	Simultaneous approach authorized. For inop ALS, increase S-ILS 1L Cat E visibility to RVR 4000 and S-LOC 1L Cat E visibility to RVR 5000.		D-ATIS 128.375	KANSAS CITY APP CON 120.95 318.1	INTERNATIONAL TOWER 128.2 254.25	GND CON 121.8	CLNC DEL 135.7



CATEGORY	A	B	C	D	E
S-ILS 1L	1214/18 200 (200-½)				
S-LOC 1L	1340/24	326 (400-½)	1340/26 326 (400-½)		
C CIRCLING	1540-1	513 (600-1)	1540-1½ 513 (600-1½)	1580-2 553 (600-2)	



NC-3, 05 NOV 2020 to 03 DEC 2020

NC-3, 05 NOV 2020 to 03 DEC 2020