

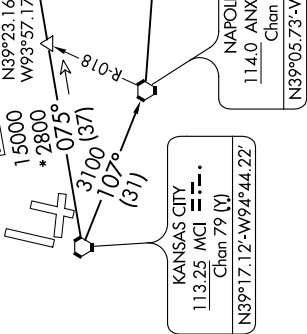
# LAKES THREE DEPARTURE

AL-780 (FAA)

KANSAS CITY INTL (MCI)  
KANSAS CITY, MISSOURI

NC-3, 05 NOV 2020 to 03 DEC 2020

D-ATIS  
128.375  
CLNC DEL  
135.7  
CPDLC  
KANSAS CITY DEP CON  
123.95 318.1



NOTE: Chart not to scale.

## DEPARTURE ROUTE DESCRIPTION

**TAKEOFF ALL RUNWAYS:** Climb on assigned heading for RADAR vectors to appropriate route. Expect filed altitude 10 minutes after departure.

**COLUMBIA TRANSITION (LAKES3.COU):** From over MCI VORTAC on MCI R-107 to ANX VORTAC, then on ANX R-088 and COU R-292 to COU VOR/DME.

**FRANC TRANSITION (LAKES3.FRANCI):** From over MCI VORTAC on MCI R-107 to ANX VORTAC, then on ANX R-088 to FRANC FIX.

**SPINNER TRANSITION (LAKES3.SPI):** From over MCI VORTAC on MCI R-075 and SPI R-265 to TWIN FIX, then on SPI R-265 to SPI VORTAC.

**TWIN TRANSITION (LAKES3.TWAINI):** From over MCI VORTAC on MCI R-075 and SPI R-265 to TWIN FIX.

NOTE: RADAR required.  
NOTE: DME required.

TAKEOFF MINIMUMS  
Rwys 1L, 1R, 9, 19R, 19L, 27: Standard.



NC-3, 05 NOV 2020 to 03 DEC 2020