

APP CRS	Rwy Idg	9500
191°	TDZE	994
	Apt Elev	1026

RNAV (RNP) Z RWY 19L

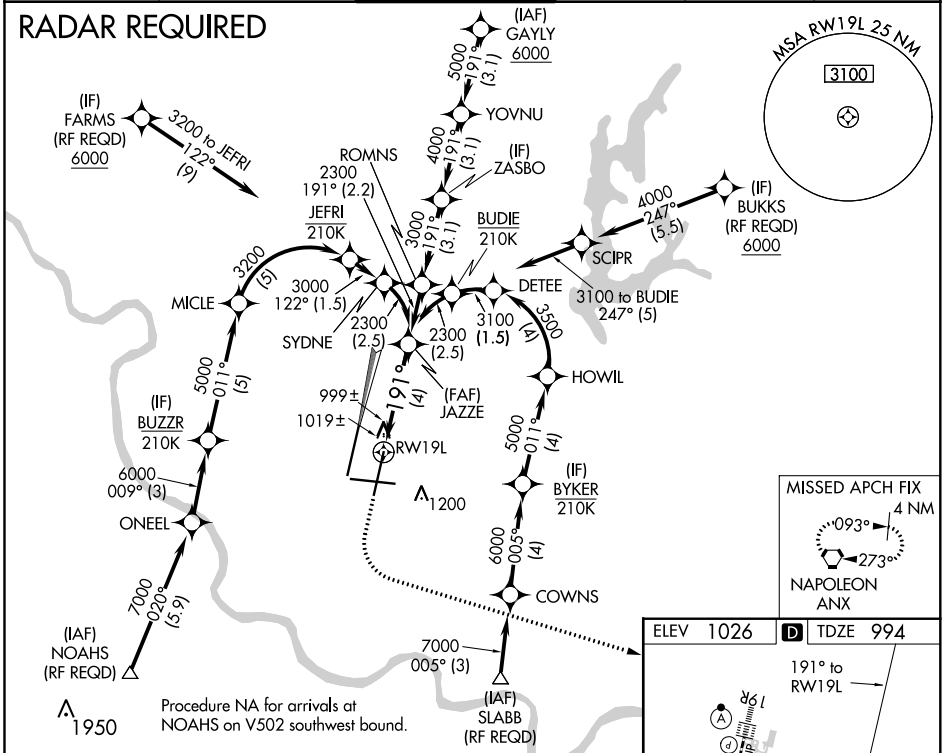
KANSAS CITY INTL (MCI)

▼ For uncompensated Baro-VNAV systems, procedure NA below -20°C (-4°F) or above 54°C (130°F). For inop MALS, increase RNP 0.20 all Cats visibility to RVR 5000 and RNP 0.30 all Cats visibility to RVR 6000. GPS required. Simultaneous approach authorized with Rwy 19R, except for arrivals at NOAHS, FARMS, BUKKS, and SLABB. Use of FD or AP providing RNAV track guidance required during simultaneous operations.

MALS	MISSED APPROACH:
	Climb to 1500 then climbing left turn to 4000 direct ANX VORTAC and hold.

D-ATIS	KANSAS CITY APP CON	INTERNATIONAL TOWER	GND CON	CLNC DEL	CPDLC
128.375	120.95 318.1	128.2 254.25	121.8	135.7	

RADAR REQUIRED



NC-3, 05 NOV 2020 to 03 DEC 2020

NC-3, 05 NOV 2020 to 03 DEC 2020

1500	4000	ANX

JAZZE
2300

RWY 19L

191°

2300

GP 3.00° TCH 59

See Planview for multiple IF locations.

4 NM

CATEGORY	A	B	C	D
RNP 0.20 DA		1306/26	312 (300-½)	
RNP 0.30 DA		1361/35	367 (400-¾)	

AUTHORIZATION REQUIRED

