

APP CRS	Rwy Idg	10801
191°	TDZE	989
	Apt Elev	1026

RNAV (RNP) Z RWY 19R

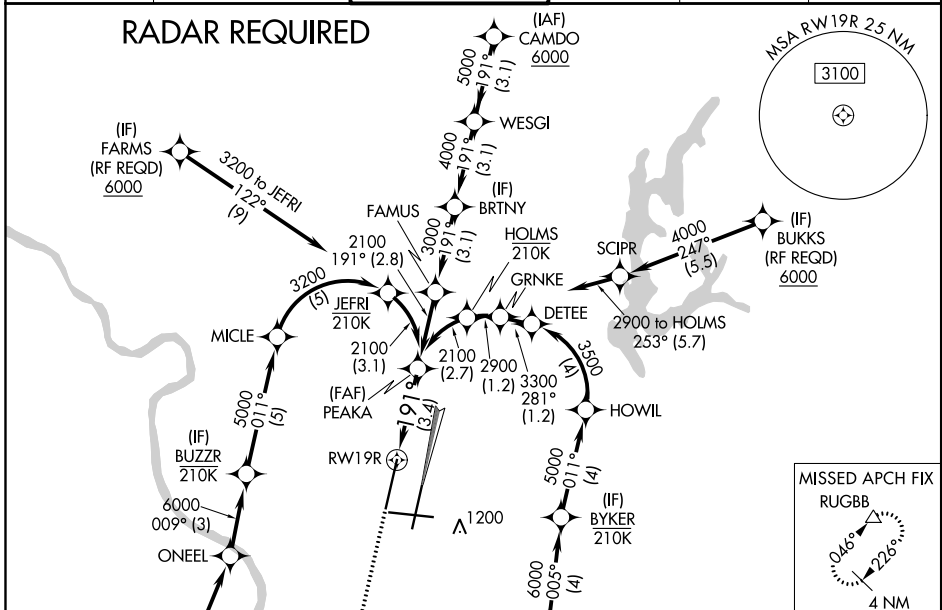
KANSAS CITY INTL (MCI)

▼ For uncompensated Baro-VNAV systems, procedure NA below -20°C (-4°F) or above 54°C (130°F). For inop. ALSF, increase RNP 0.15 all Cats visibility to RVR 5000 and RNP 0.30 all Cats visibility to 1%. GPS required. Simultaneous approach authorized with Rwy 19L, except for arrivals at NOAHS, FARMS, BUKKS, and SLABB. Use of FD or AP providing RNAV track guidance required during simultaneous operations.

ALSF-2 MISSED APPROACH: Climb to 2000 then climbing right turn to 4000 direct RUGBB and hold.

D-ATIS 128.375	KANSAS CITY APP CON 120.95 318.1	INTERNATIONAL TOWER 128.2 254.25	GND CON 121.8	CLNC DEL 135.7	CPDLC
--------------------------	--	--	-------------------------	--------------------------	-------

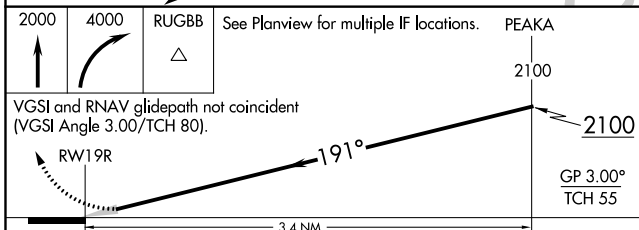
RADAR REQUIRED



NC-3, 05 NOV 2020 to 03 DEC 2020

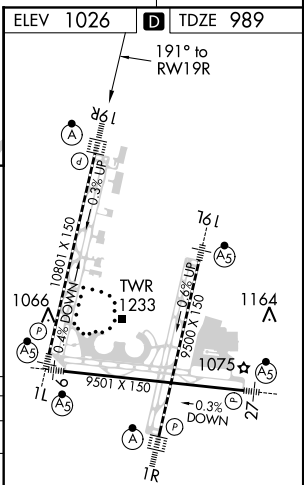
NC-3, 05 NOV 2020 to 03 DEC 2020

ELEV 1026	D TDZE 989
-----------	-------------------



CATEGORY	A	B	C	D
RNP 0.15 DA		1321/30	332 (300-5%)	
RNP 0.30 DA		1415/50	426 (400-1)	

AUTHORIZATION REQUIRED



HIRL all Rwys
TDZ/CL Rwys 1L, 1R, 19R and 19L