

APP CRS 011°	Rwy Idg TDZE Apt Elev	9500 1017 1026
------------------------	-----------------------------	---

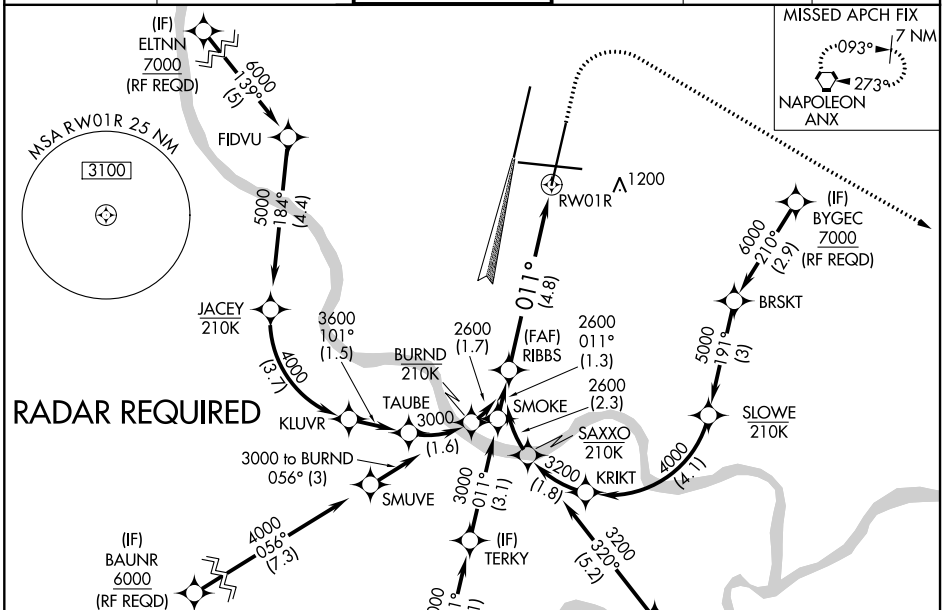
RNAV (RNP) Z RWY 1R

KANSAS CITY INTL (MCI)

▼ For uncompensated Baro-VNAV systems, procedure NA below -20°C (-4°F) or above 54°C (130°F). For inop ALSF, increase RNP 0.30 visibility to RVR 5000. GPS required. Simultaneous approach authorized with Rwy 1L, except for arrivals at BYGEC, COOKD, BAUNR, and ELTNN. Use of FD or AP providing RNAV track guidance required during simultaneous operations.

ALSF-2 	MISSED APPROACH: Climb to 1500 then climbing right turn to 4000 direct ANX VORTAC and hold.
------------	---

D-ATIS 128.375	KANSAS CITY APP CON 120.95 318.1	INTERNATIONAL TOWER 128.2 254.25	GND CON 121.8	CLNC DEL 135.7	CPDLC
--------------------------	--	--	-------------------------	--------------------------	-------



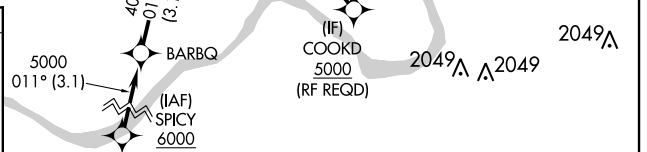
NC-3, 05 NOV 2020 to 03 DEC 2020

NC-3, 05 NOV 2020 to 03 DEC 2020

ELEV 1026	TDZE 1017
-----------	-----------

HIRL all Rwys
TDZ/CL Rwys 1L, 1R, 19R and 19L

1066
1164
1075
9501 X 150
10801 X 150
1233
1233
1R
0.3% DOWN
0.3% UP
0.3% DOWN
0.3% UP
011° to RWY 1R



1500	4000	ANX

GP 3.00°
TCH 59

See Planview for multiple IF locations.

CATEGORY	A	B	C	D
RNP 0.30 DA	1283/24	266	(300-½)	

AUTHORIZATION REQUIRED