

# RNAV (RNP) Z RWY 27

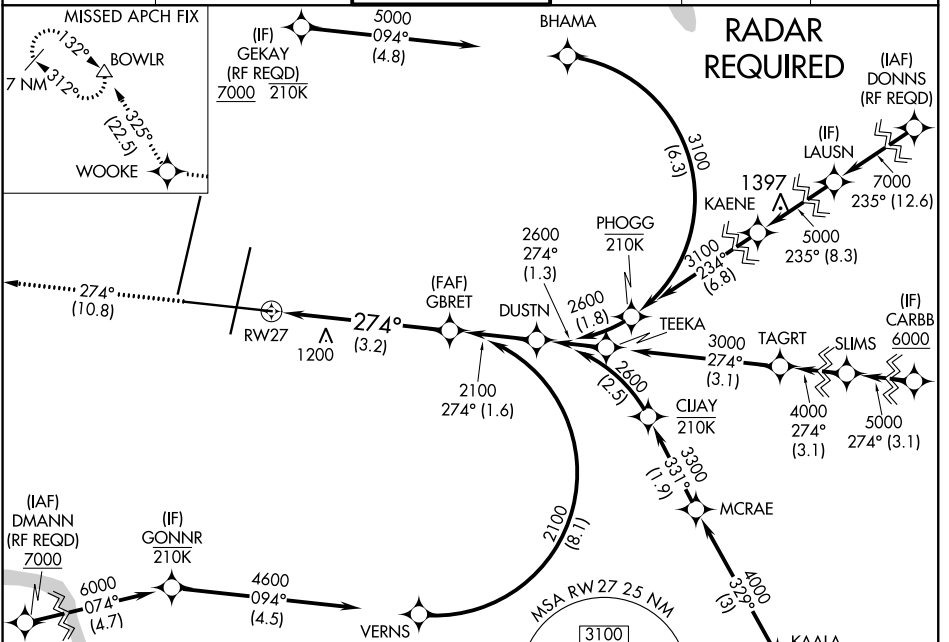
KANSAS CITY INTL (MCI)

APP CRS	Rwy Idg	<b>9501</b>
<b>274°</b>	TDZE	<b>1026</b>
	Apt Elev	<b>1026</b>

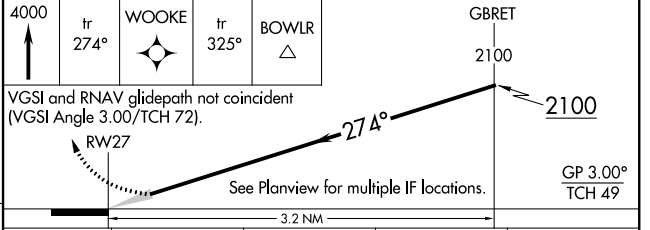
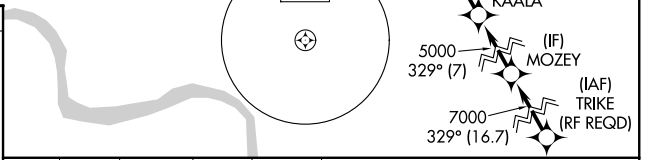
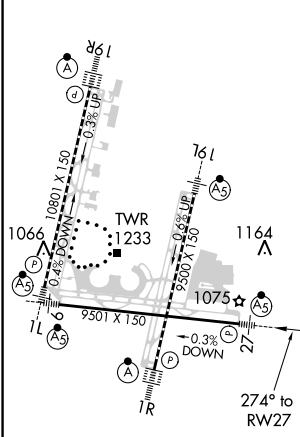
▼ For uncompensated Baro-VNAV systems, procedure NA below -20°C (-4°F) or above 54°C (130°F). For inop MALSR, increase RNP 0.15 all Cats visibility to 1¼ and RNP 0.30 all Cats visibility to 1½. GPS required.

MALSR MISSED APPROACH: Climb to 4000 on track 274° to WOOKIE and on track 325° to BOWLR and hold.

D-ATIS <b>128.375</b>	KANSAS CITY APP CON <b>120.95 318.1</b>	<b>INTERNATIONAL TOWER</b> <b>128.2 254.25</b>	GND CON <b>121.8</b>	CLNC DEL <b>135.7</b>	CPDLC
--------------------------	--	---	-------------------------	--------------------------	-------



ELEV	<b>1026</b>	TDZE	<b>1026</b>
------	-------------	------	-------------



CATEGORY	A	B	C	D
RNP 0.15 DA		1410/45	384 (400-¾)	
RNP 0.30 DA		1511/60	485 (500-1¼)	

## AUTHORIZATION REQUIRED

NC-3, 05 NOV 2020 to 03 DEC 2020

NC-3, 05 NOV 2020 to 03 DEC 2020