

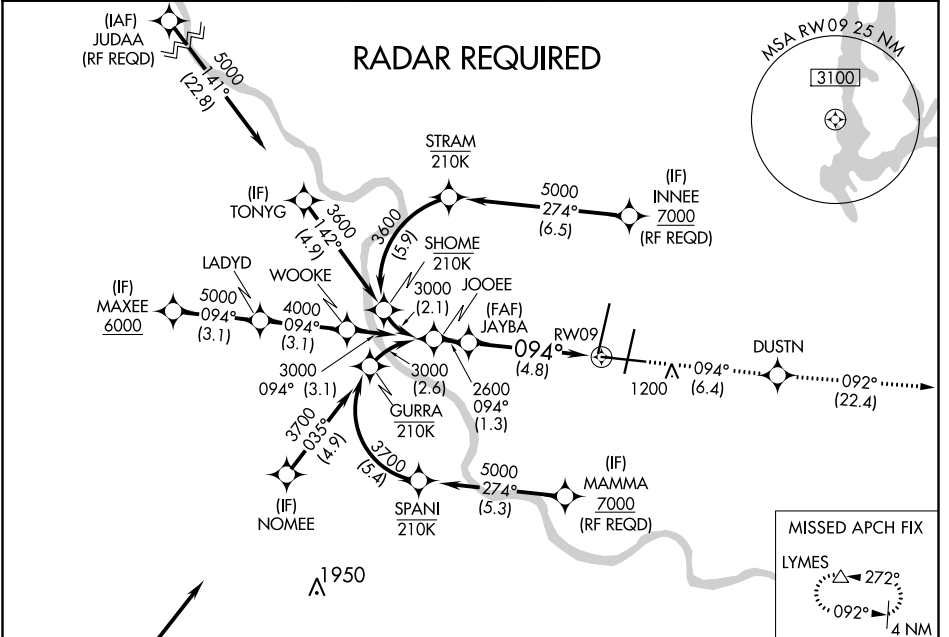
APP CRS 094°	Rwy Idg TDZE Apt Elev	9501 1015 1026
------------------------	-----------------------------	---

RNAV (RNP) Z RWY 9

KANSAS CITY INTL (MCI)

<p>▽ For uncompensated Baro-VNAV systems, procedure NA below -20°C (-4°F) or above 54°C (130°F). For inop MALS/R, increase RNP 0.30 visibility to RVR 6000. GPS required.</p>	<p>MALS/R</p>	<p>MISSED APPROACH: Climb to 4000 on track 094° to DUSTN and on track 092° to LYMES and hold.</p>
--	---------------	---

D-ATIS 128.375	KANSAS CITY APP CON 120.95 318.1	INTERNATIONAL TOWER 128.2 254.25	GND CON 121.8	CLNC DEL 135.7	CPDLC
--------------------------	--	--	-------------------------	--------------------------	-------



NC-3, 05 NOV 2020 to 03 DEC 2020

NC-3, 05 NOV 2020 to 03 DEC 2020

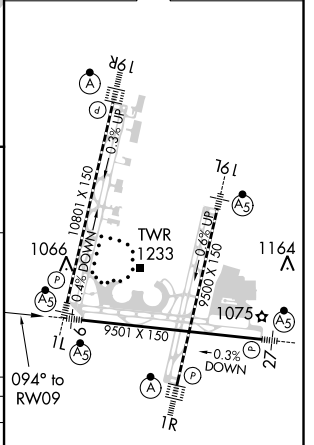


ELEV 1026	D TDZE 1015
-----------	--------------------

JOOEE	JAYBA	4000	tr 094°	DUSTN	tr 092°	LYMES
3000	2600					

See Planview for multiple IF locations.

GP 3.00° TCH 56	1.3 NM	4.8 NM	
CATEGORY	A	B	C
RNP 0.30 DA		1393/40	378 (400-¾)



AUTHORIZATION REQUIRED

HIRL all Rwys
TDZ/CL Rwys 1L, 1R, 19R and 19L