


WAAS CH 82108 W19A	APP CRS 191°	Rwy ldg 9500 TDZE 995 Apt Elev 1027
--	------------------------	--

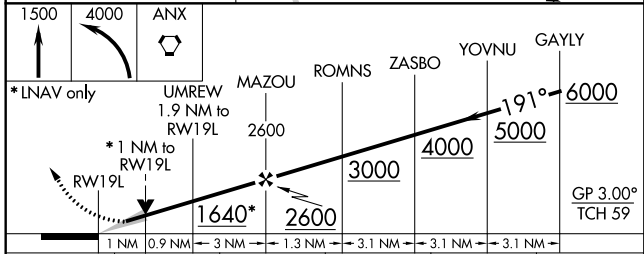
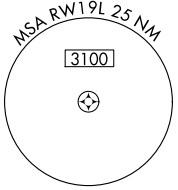
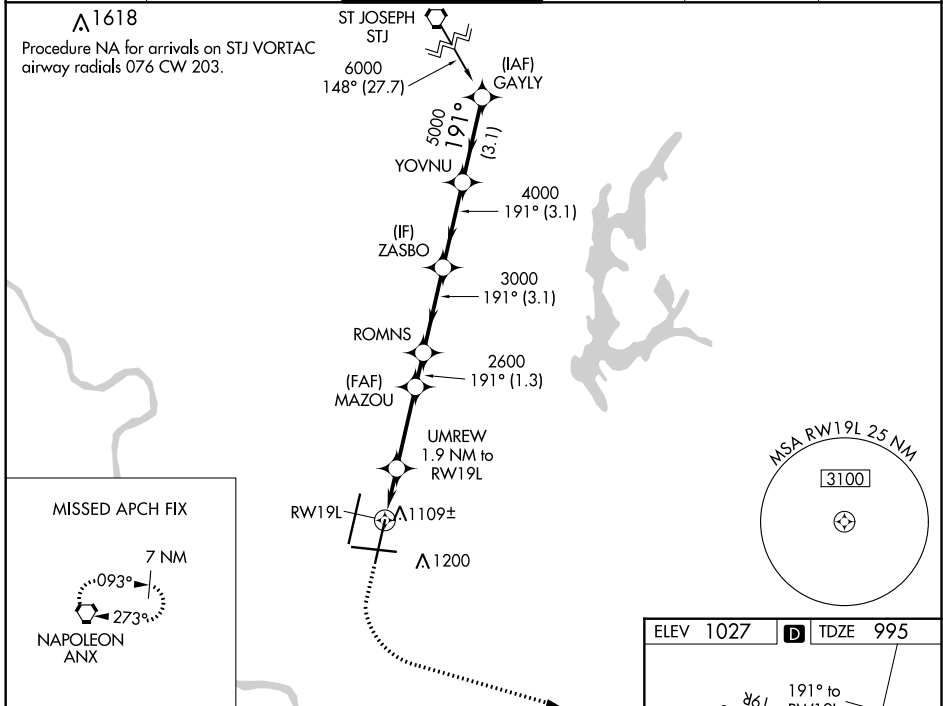
RNAV (GPS) Y RWY 19L

KANSAS CITY INTL (MCI)

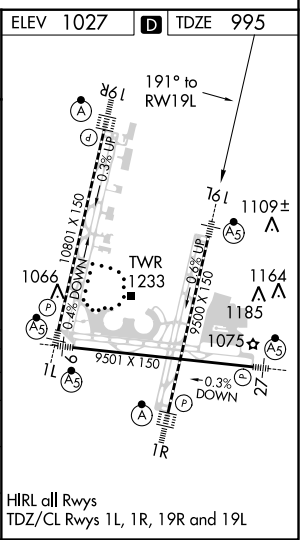
▽ For uncompensated Baro-VNAV systems, LNAV/VNAV NA below -18°C (0°F) or above 54°C (130°F). Simultaneous approach authorized. Use of FD or AP providing RNAV track guidance required during simultaneous operations. LNAV procedure NA during simultaneous operations. DME/DME RNP-0.3 NA. For inop ALS, increase LPV Cat E visibility to RVR 4000, LNAV/VNAV all Cats visibility to 1¼ SM, and LNAV Cat C/D/E visibility to RVR 5500.

MALSR

MISSED APPROACH:
 Climb to 1500 then climbing left turn to 4000 direct ANX VORTAC and hold.

D-ATIS 128.375	KANSAS CITY APP CON 120.95 318.1	INTERNATIONAL TOWER 128.2 254.25	GND CON 121.8	CLNC DEL 135.7	CPDLC
--------------------------	--	--	-------------------------	--------------------------	-------



CATEGORY	A	B	C	D	E
LPV DA		1195/18	200 (200-½)		
LNAV/VNAV DA		1381/45	386 (400-7%)		
LNAV MDA	1360/24	365 (400-½)	1360/35	365 (400-5%)	
CIRCLING	1540-1	513 (600-1)	1540-1½ 513 (600-1½)	1580-2	553 (600-2)



NC-3, 05 NOV 2020 to 03 DEC 2020

NC-3, 05 NOV 2020 to 03 DEC 2020