

WAAS CH 42808 W01B	APP CRS 011°	Rwy ldg 10801 TDZE 1014 Apt Elev 1027
--	------------------------	--

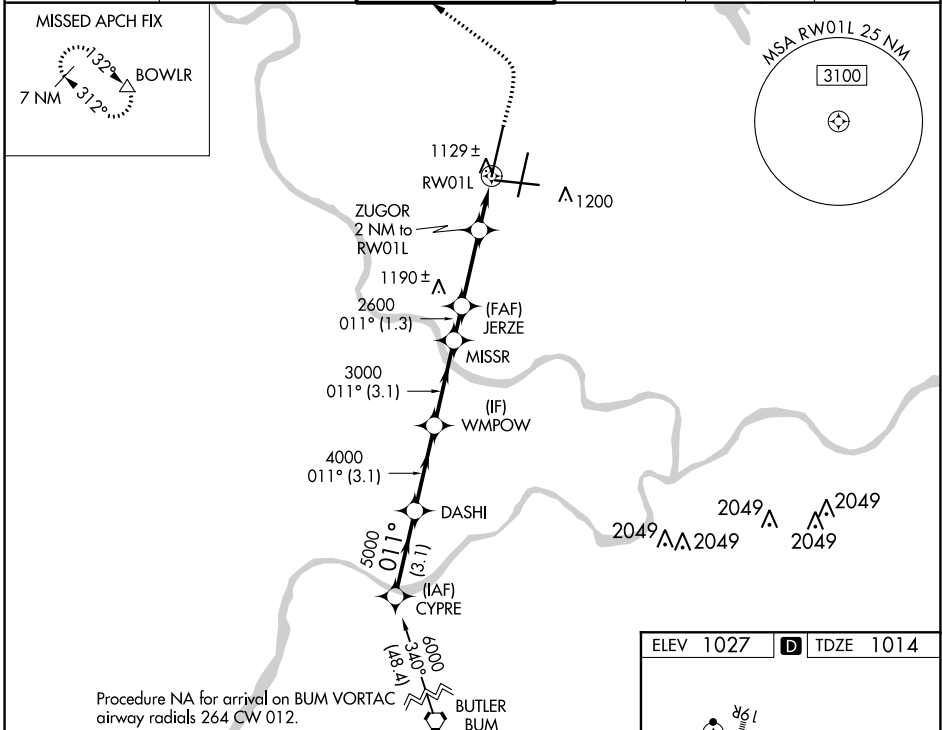
RNAV (GPS) Y RWY 1L

KANSAS CITY INTL (MCI)

▼ For uncompensated Baro-VNAV systems, LNAV/VNAV NA below -18°C (0°F) or above 54°C (130°F). Simultaneous approach authorized. Use of FD or AP providing RNAV track guidance required during simultaneous operations. LNAV procedure NA during simultaneous operations. DME/DME RNP-0.3 NA. For Inop ALS, increase LNAV Cat C/D visibility to RVR 5500.

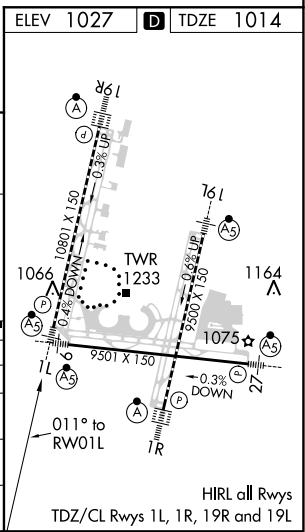
MALS R
MISSED APPROACH: Climb to 2000 then climbing left turn to 4000 direct BOWL R and hold.

D-ATIS 128.375	KANSAS CITY APP CON 120.95 318.1	INTERNATIONAL TOWER 128.2 254.25	GND CON 121.8	CLNC DEL 135.7	CPDLC
--------------------------	--	--	-------------------------	--------------------------	-------



Procedure NA for arrival on BUM VORTAC airway radials 264 CW 012.

CYPRE	DASHI	WMPOW	MISSR	JERZE	ZUGOR	BOWLR
6000	5000	4000	3000	2600	2000	2000
GP 3.00° TCH 57	011°					
	3.1 NM	3.1 NM	3.1 NM	1.3 NM	2.8 NM	1.1 NM
CATEGORY	A	B	C	D		
LPV DA		1214/18	200 (200-½)			
LNAV/VNAV DA		1331/24	317 (400-½)			
LNAV MDA	1380/24	366 (400-½)	1380/35	366 (400-¾)		
CIRCLING	1540-1	513 (600-1)	1540-1½ 513 (600-1½)	1580-2 553 (600-2)		



NC-3, 05 NOV 2020 to 03 DEC 2020

NC-3, 05 NOV 2020 to 03 DEC 2020