


WAAS CH <b>56608</b> <b>W09A</b>	APP CRS <b>094°</b>	Rwy Idg TDZE <b>1015</b> Apt Elev <b>1026</b>	<b>9501</b>
--	------------------------	---	-------------

# RNAV (GPS) Y RWY 9

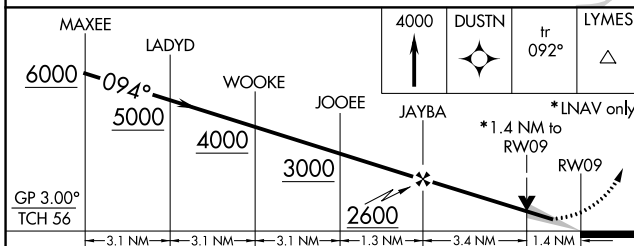
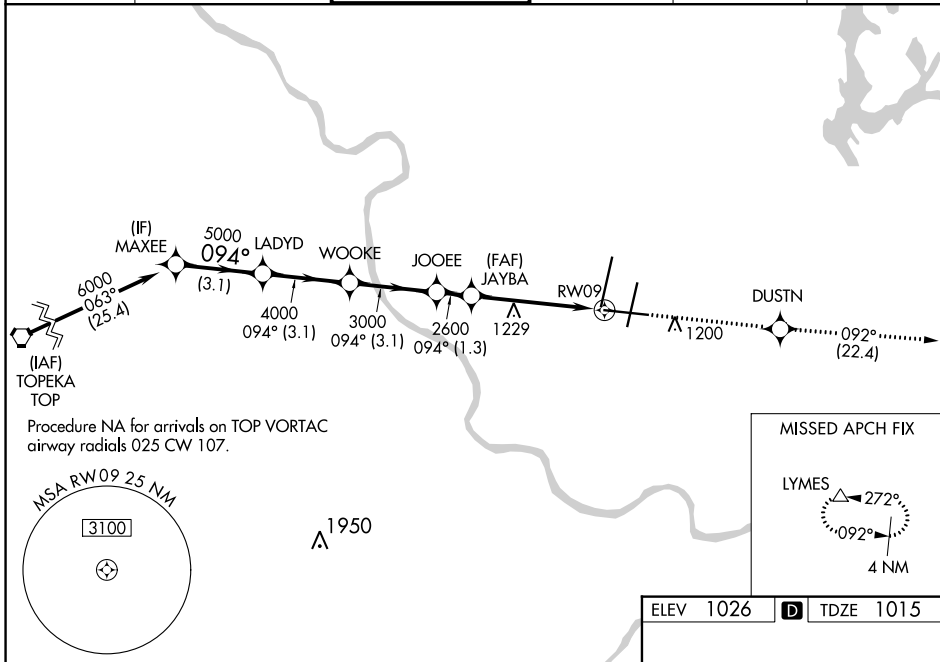
KANSAS CITY INTL (MCI)

**▽** Inop table does not apply to LPV and LNAV/VNAV.  
For uncompensated Baro-VNAV systems, LNAV/VNAV NA below -20°C (-4°F) or above 54°C (130°F). DME/DME RNP-0.3 NA.  
For inop MALSR, increase LNAV Cat A/B visibility to RVR 5000 and Cat C/D/E visibility to 1½ mile.

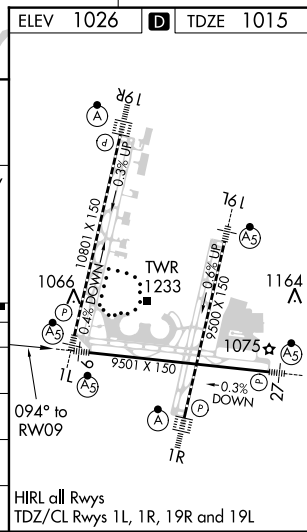
MALSR 

MISSED APPROACH: Climb to 4000 direct DUSTN and on track 092° to LYMES and hold.

D-ATIS <b>128.375</b>	KANSAS CITY APP CON <b>120.95 318.1</b>	INTERNATIONAL TOWER <b>128.2 254.25</b>	GND CON <b>121.8</b>	CLNC DEL <b>135.7</b>	CPDLC
--------------------------	--	--	-------------------------	--------------------------	-------



CATEGORY	A	B	C	D	E
LPV DA	1315/50		300 (300-1)		
LNAV/VNAV DA	1320/50		305 (300-1)		
LNAV MDA	1500/40	485 (500-¾)	1500/50		485 (500-1)
CIRCLING	1540-1	514 (600-1)	1540-1½ 514 (600-1½)	1580-2	554 (600-2)



NC-3, 05 NOV 2020 to 03 DEC 2020

NC-3, 05 NOV 2020 to 03 DEC 2020