

# WILDCAT FIVE DEPARTURE

AL-780 (FAA)

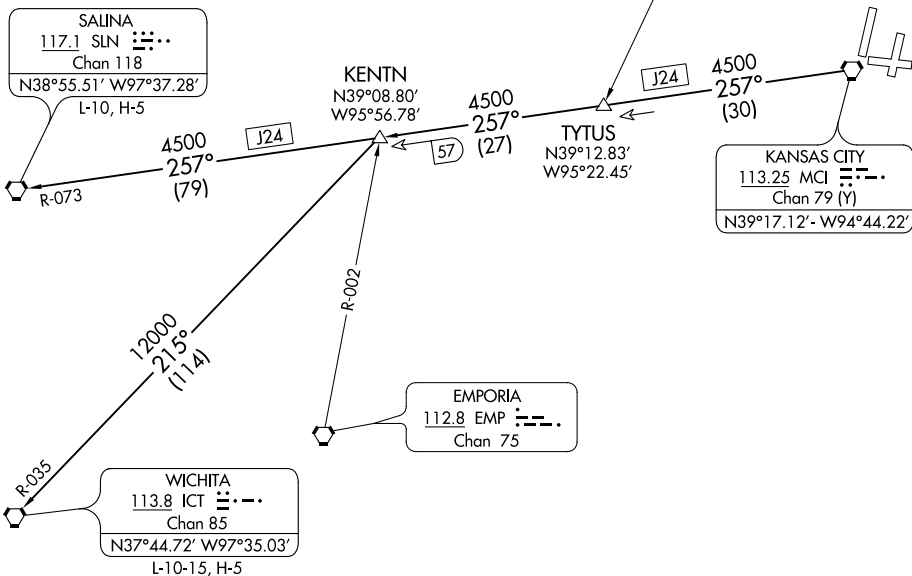
KANSAS CITY INTL (MCI)  
KANSAS CITY, MISSOURI

D-ATIS  
128.375  
CLNC DEL  
135.7  
CPDLC  
KANSAS CITY DEP CON  
124.7 284.7

### TAKEOFF MINIMUMS

Rwys 1L, 1R, 9, 19R, 19L, 27: Standard.

NOTE: RADAR required.



NC-3, 05 NOV 2020 to 03 DEC 2020

NC-3, 05 NOV 2020 to 03 DEC 2020

NOTE: Chart not to scale.



## DEPARTURE ROUTE DESCRIPTION

**TAKEOFF ALL RUNWAYS:** Climb on assigned heading for RADAR vectors to appropriate route. Expect filed altitude 10 minutes after departure.

**KENTN TRANSITION (WLDCT5.KENTN):** From over MCI VORTAC on MCI R-257 to KENTN.

**SALINA TRANSITION (WLDCT5.SLN):** From over MCI VORTAC on MCI R-257 and SLN R-073 to SLN VORTAC.

**WICHITA TRANSITION (WLDCT5.ICT):** From over MCI VORTAC on MCI R-257 to KENTN, then on ICT R-035 to ICT VORTAC.

# WILDCAT FIVE DEPARTURE

(WLDCT5.MCI) 01FEB18

KANSAS CITY, MISSOURI  
KANSAS CITY INTL (MCI)