

WAAS CH 86720 W13B	APP CRS 132°	Rwy Idg TDZE 151 Apt Elev 151	5098
--	------------------------	---	-------------

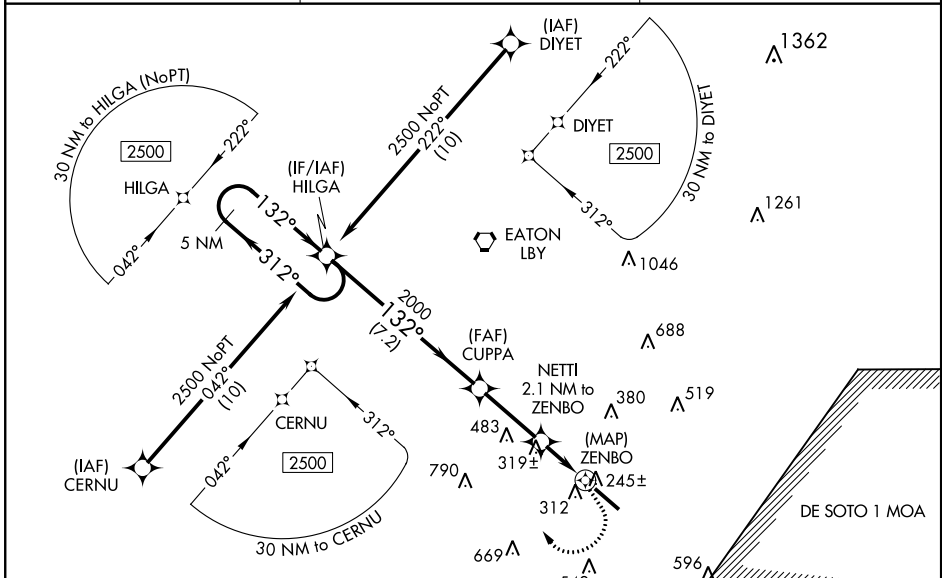
RNAV (GPS) Y RWY 13

HATTIESBURG BOBBY L CHAIN MUNI (HBG)

▼ For uncompensated Baro-VNAV systems, LNAV/VNAV NA below -15°C (5°F) or above 43°C (109°F). DME/DME RNP-0.3 NA. When local altimeter setting not received, use Hattiesburg-Laurel Rgnl altimeter setting and increase all DA 51 feet and all MDA 60 feet. Increase LPV all Cats and LNAV Cat C/D visibility ½ mile and LNAV/VNAV all Cats and Circling Cat C visibility ¼ mile. Baro-VNAV and VDP NA when using Hattiesburg-Laurel Rgnl altimeter setting.

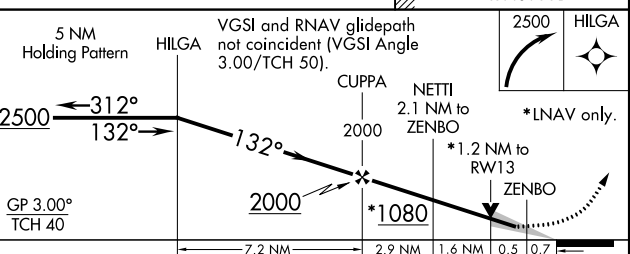
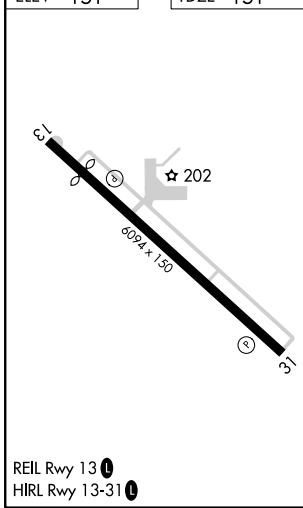
MISSED APPROACH: Climbing right turn to 2500 direct HILGA and hold.

ASOS 135.425	HOUSTON CENTER 126.8 327.8	UNICOM 122.8 (CTAF) 0
------------------------	--------------------------------------	---------------------------------



ELEV 151	TDZE 151
----------	----------

Uncontrolled helicopter and military airlift aircraft in vicinity of Hagler AAF and Shelby Auxiliary 1 Airfield.



CATEGORY	A	B	C	D
LPV DA		442-1	291 (300-1)	
LNAV/VNAV DA		523-1¼	372 (400-1¼)	
LNAV MDA	580-1	429 (500-1)	580-1¼	429 (500-1¼)
CIRCLING	620-1 469 (500-1)	700-1 549 (600-1)	700-1½ 549 (600-1½)	720-2 569 (600-2)

SC-4, 05 NOV 2020 to 03 DEC 2020

SC-4, 05 NOV 2020 to 03 DEC 2020