

LOC I-GNK <b>110.9</b>	APP CRS <b>311°</b>	Rwy ldg TDZE Apt Elev <b>6500</b> <b>681</b> <b>694</b>
---------------------------	------------------------	--

# ILS or LOC RWY 31

LAGRANGE-CALLAWAY (LGC)

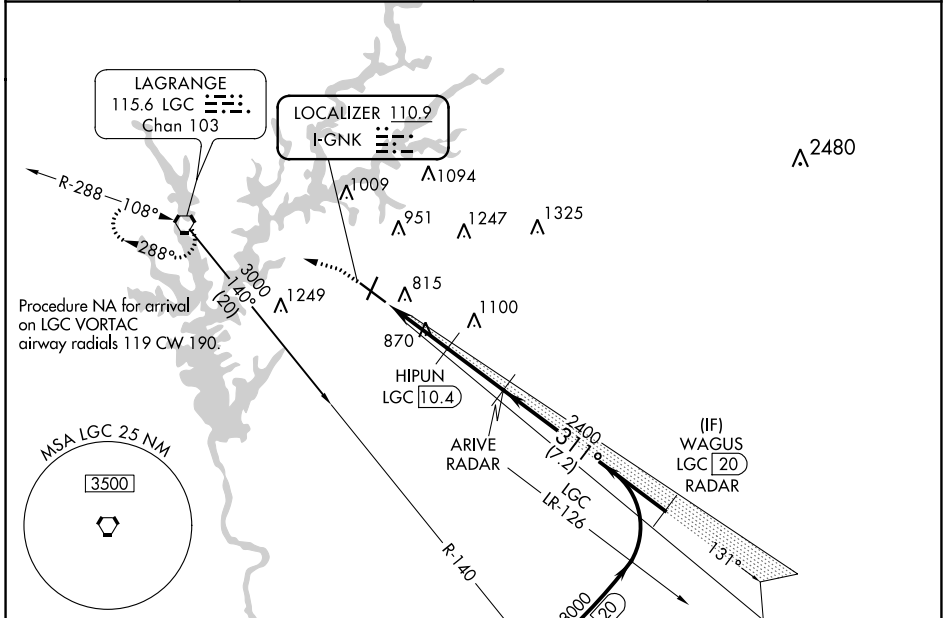
DME required for procedure entry.  
RADAR and DME required for LOC only.

**MALSR**  
A5

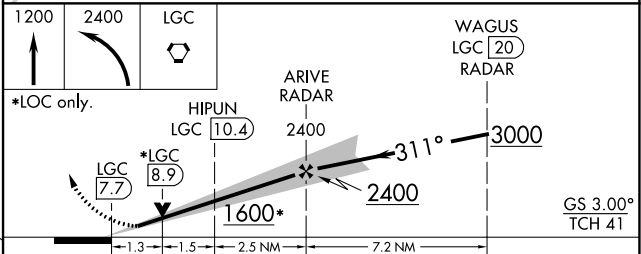
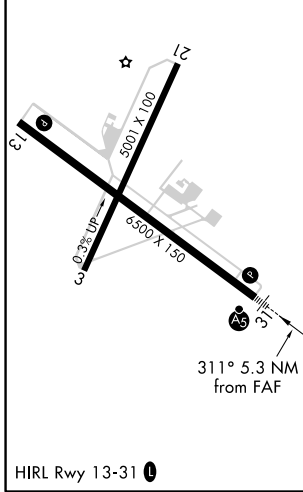
MISSED APPROACH: Climb to 1200 then climbing left turn to 2400 direct LGC VORTAC and hold.

**NA** Circling Rwy 13, 21 NA at night. DME from LGC VORTAC.  
Simultaneous reception of I-GNK and LGC DME required.

AWOS-3 <b>126.325</b>	ATLANTA APP CON* <b>125.5 323.1</b>	CINC DEL <b>119.25</b>	UNICOM <b>122.975</b> (CTAF) <b>0</b>
--------------------------	--	---------------------------	--



ELEV 694	TDZE 681
----------	----------



CATEGORY	A	B	C	D
S-ILS 31	881-1/2		200 (200-1/2)	
S-LOC 31	1120-1/2 439 (500-1/2)		1120-3/4 439 (500-3/4)	
<b>C</b> CIRCLING	1280-1 586 (600-1)		1540-2 1/2 906 (1000-3)	

SE-4, 05 NOV 2020 to 03 DEC 2020

SE-4, 05 NOV 2020 to 03 DEC 2020