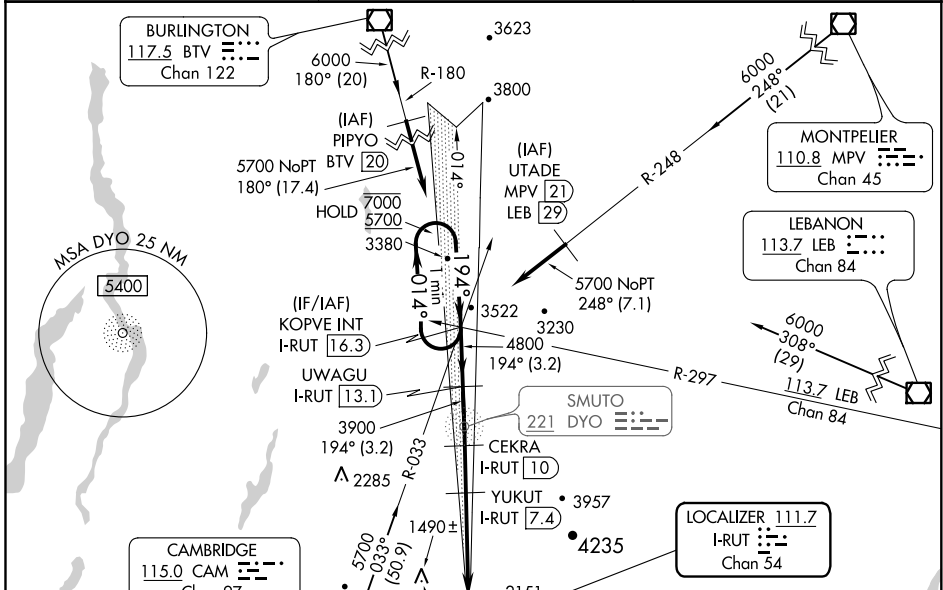


LOC/DME I-RUT <b>111.7</b> Chan <b>54</b>	APP CRS <b>194°</b>	Rwy Idg <b>5003</b> TDZE <b>787</b> Apt Elev <b>787</b>
---	------------------------	---

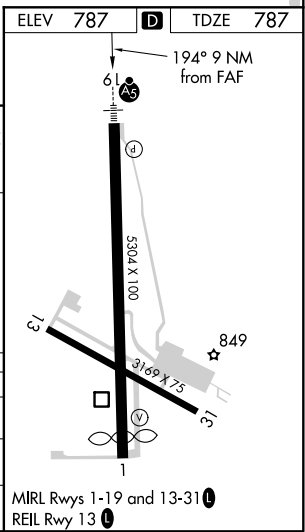
# ILS Y or LOC Y RWY 19

RUTLAND-SOUTHERN VERMONT RGNL (RUT)

DME required.		MALSIR AS	MISSED APPROACH: Climb to 2840 then climbing right turn to 5700 on heading 360° and CAM VOR/DME R-033 to KOPVE INT/I-RUT 16.3 DME and hold.
Circling to Rwy 13, 31 NA at night. Circling NA northeast of Rws 19 and 31. Inop table does not apply to S-ILS 19 all Cats, S-LOC 19 Cats C/D.	AWOS-3PT <b>118.375</b>		



One Minute Holding Pattern 7000 ← 014° 5700 → 194° GS 3.20° TCH 54	KOPVE INT I-RUT [16.3]	UWAGU I-RUT [13.1]	CEKRA I-RUT [10]	YUKUT I-RUT [7.4]	*I-RUT [3.9]	I-RUT [0.9]
	3.2 NM	3.2 NM	2.5 NM	3.5 NM	3 NM	*LOC only
CATEGORY	A	B	C	D		
S-ILS 19	2162-5		1375 (1400-5)			
S-LOC 19	2160-¾ 1373 (1400-¾)	2160-1 1373 (1400-1)	2160-3 1373 (1400-3)			
CIRCLING	2160-1¼ 1373 (1400-1¼)	2160-1½ 1373 (1400-1½)	2520-3 1733 (1800-3)	2760-3 1973 (2000-3)		



NE-1, 05 NOV 2020 to 03 DEC 2020

NE-1, 05 NOV 2020 to 03 DEC 2020