

LOC/DME I-RUT	APP CRS	Rwy Ldg	5003
111.7	194°	TDZE	787
Chan 54		Apt Elev	787

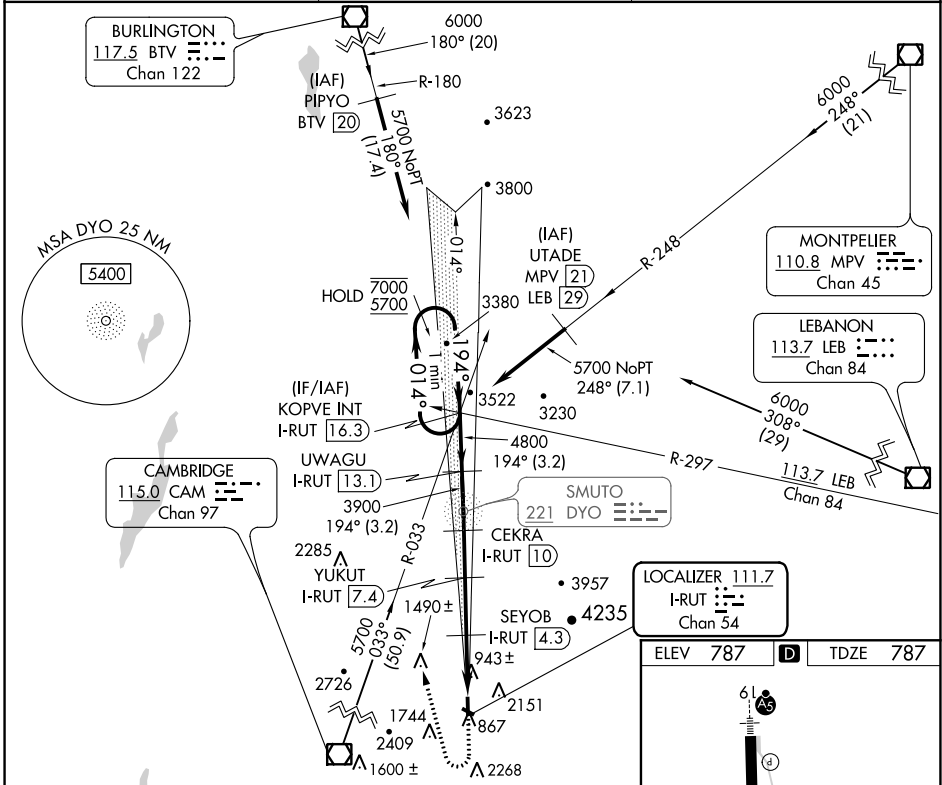
ILS Z or LOC Z RWY 19

RUTLAND-SOUTHERN VERMONT RGNL (RUT)

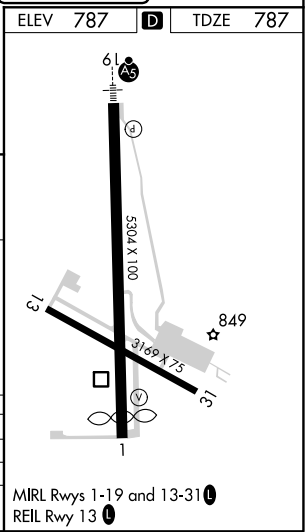
DME required.

MALS R MISSED APPROACH: Climb to 1900 then climbing right turn to 5700 on heading 360° and CAM VOR/DME R-033 to KOPVE INT/I-RUT 1.6.31 DME and hold. # Missed approach requires minimum climb of 425 feet per NM to 3200; if unable to meet climb gradient, see ILS Y or LOC Y Rwy 19.

AWOS-3PT 118.375	BOSTON CENTER 135.7 282.2	UNICOM 122.8 (CTAF) 0
---------------------	------------------------------	--------------------------



One Minute Holding Pattern	1900	5700	CAM R-033	KOPVE INT
KOPVE INT I-RUT 1.6.3	↑	hdg 360°		
UWAGU I-RUT 13.1	← 014°	→ 194°		
CEKRA I-RUT 10				
YUKUT I-RUT 7.4				
SEYOB I-RUT 4.3				
				*LOC only
7000	← 014°	→ 194°		
5700				
GS 3.20°				
TCH 54				
	3.2 NM	3.2 NM	2.5 NM	3.1 NM
				2.3 NM
				1.1 NM
CATEGORY	A	B	C	D
S-ILS 19 #	1451-1½ 664 (700-1½)			
S-LOC 19 #	1520-½ 733 (800-½)	1520-1½ 733 (800-1½)	1520-3 733 (800-1½)	
CIRCLING	2160-1¼ 1373 (1400-1¼)	2160-½ 1373 (1400-1½)	2520-3 1733 (1800-3)	2760-3 1973 (2000-3)



NE-1, 05 NOV 2020 to 03 DEC 2020

NE-1, 05 NOV 2020 to 03 DEC 2020