

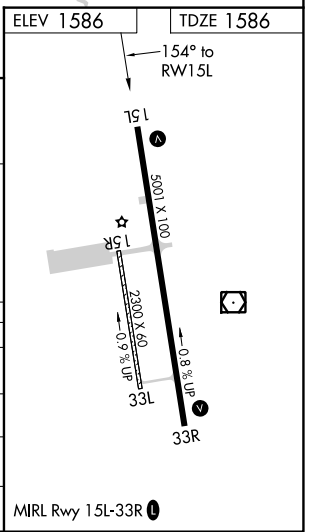
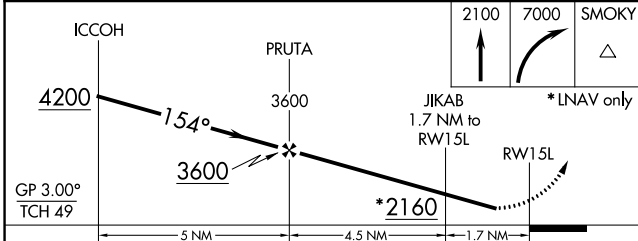
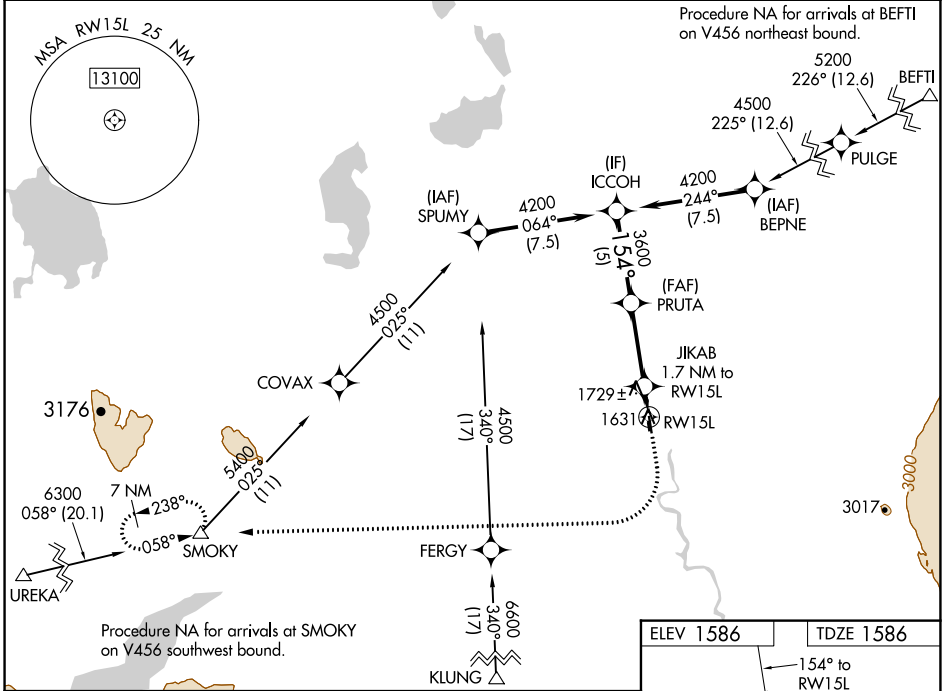
WAAS CH <b>82543</b> <b>W15A</b>	APP CRS <b>154°</b>	Rwy ldg TDZE Apt Elev	<b>5001</b> <b>1586</b> <b>1586</b>
--	------------------------	-----------------------------	---

# RNAV (GPS) RWY 15L

GULKANA (GKN) (PAGK)

RNP APCH.	MISSED APPROACH: Climb to 2100 then climbing right turn to 7000 direct SMOKY and hold, continue climb-in-hold to 7000.
<p><b>▼</b> Circling Rwy 15R, 33L NA at night. Rwy 15L helicopter visibility reduction below ¾ SM NA. For uncompensated Baro-VNAV systems, LNAV/VNAV NA below -21°C or above 54°C.</p> <p><b>⚠</b> -37°C</p>	

ASOS <b>134.85</b>	ANCHORAGE CENTER <b>119.5 317.5</b>	CTAF <b>122.9</b>
-----------------------	--	----------------------



CATEGORY	A	B	C	D
LNAV/DA		1836-1	250 (300-1)	
LPV DA		1877-1	291 (300-1)	
LNAV MDA	2040-1	454 (500-1)	2040-1 ¾	454 (500-1 ¾)
<b>C</b> CIRCLING	2040-1 454 (500-1)	2080-1 494 (500-1)	2080-1 ½ 494 (500-1 ½)	2200-2 614 (700-2)

AK, 05 NOV 2020 to 31 DEC 2020

AK, 05 NOV 2020 to 31 DEC 2020