

WAAS CH <b>40343</b> <b>W33A</b>	APP CRS <b>334°</b>	Rwy Idg TDZE Apt Elev	<b>5001</b> <b>1573</b> <b>1586</b>
--	------------------------	-----------------------------	---

# RNAV (GPS) RWY 33R

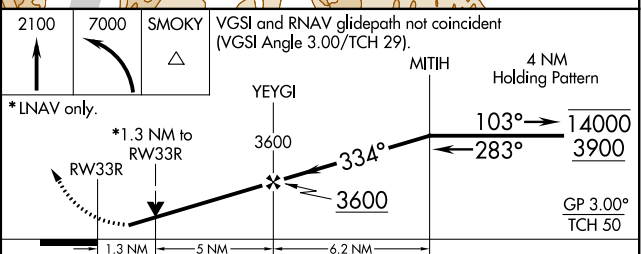
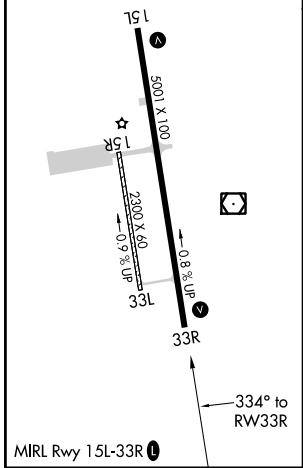
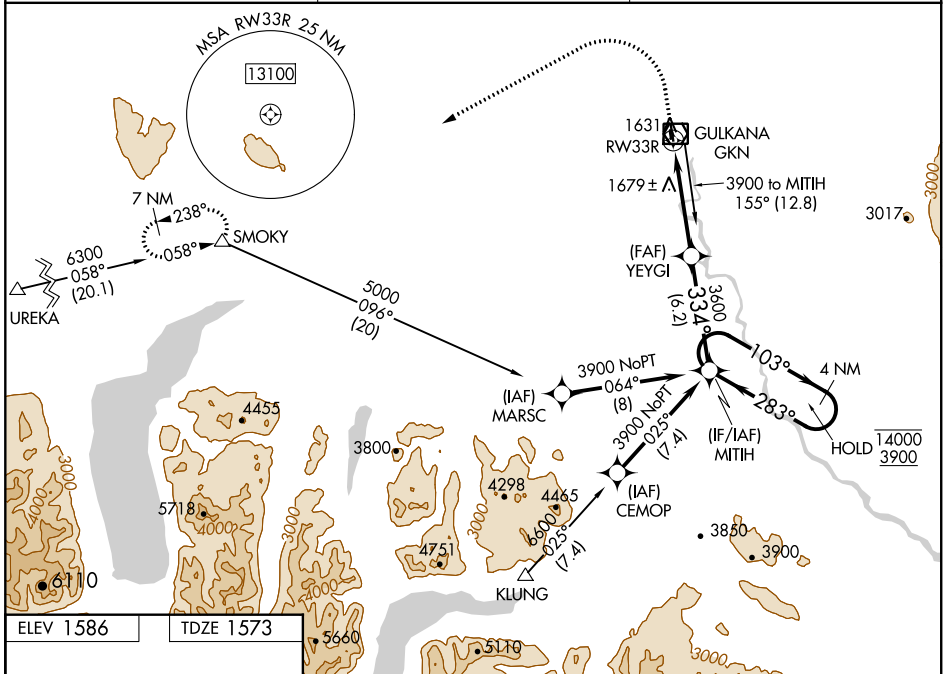
GULKANA (GKN) (PAGK)

RNP APCH.

**⚠** Circling Rwy 15R, 33L NA at night. Rwy 33R helicopter visibility reduction below 3/4 SM NA. For uncompensated Baro-VNAV systems, LNAV/VNAV NA below -25°C or above 54°C.

**MISSED APPROACH:** Climb to 2100 then climbing left turn to 7000 direct SMOKY and hold, continue climb-in-hold to 7000.

ASOS <b>134.85</b>	ANCHORAGE CENTER <b>119.5 317.5</b>	CTAF <b>122.9</b> <b>Ⓢ</b>
-----------------------	--	-------------------------------



CATEGORY	A	B	C	D
LPV DA		1823-1	250 (300-1)	
LNAV/VNAV DA		1890-1	317 (400-1)	
LNAV MDA	2000-1	427 (500-1)	2000-1 1/4	427 (500-1 1/4)
<b>C</b> CIRCLING	2040-1 454 (500-1)	2080-1 494 (500-1)	2080-1 1/2 494 (500-1 1/2)	2200-2 614 (700-2)

AK, 05 NOV 2020 to 31 DEC 2020

AK, 05 NOV 2020 to 31 DEC 2020