

APP CRS	Rwy Idg	4800
175°	TDZE	183
	Apt Elev	192

RNAV (GPS) RWY 18

ILIAMNA (ILI) (PAIL)

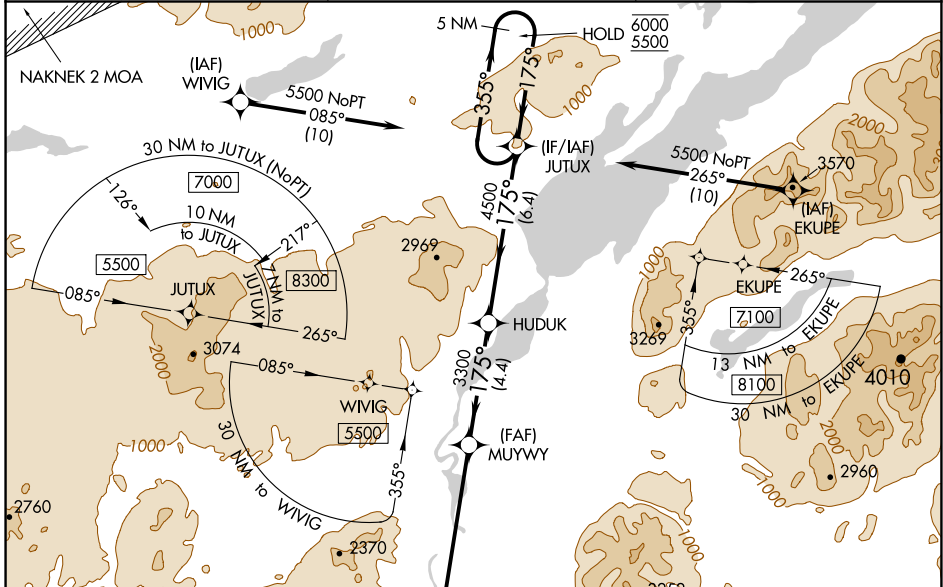
RNP APCH.

Rwy 18 helicopter visibility reduction below 3/4 SM NA.

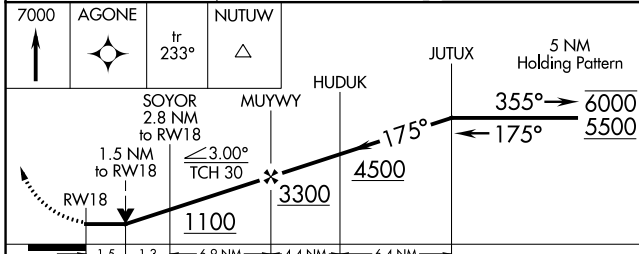
-29°C

MISSED APPROACH: Climb to 7000 direct AGONE and on track 233° to NUTUW and hold, continue climb-in-hold to 7000.

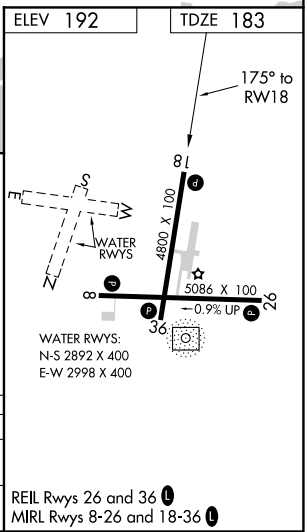
AFIS 134.95	ANCHORAGE CENTER 118.8	ILIAMNA RADIO 123.6 (CTAF) 0
-----------------------	----------------------------------	--



7000	AGONE	fr 233°	NUTUW



CATEGORY	A	B	C	D
LNVA MDA	700-1	517 (600-1)	700-1 3/8	517 (600-1 3/8)
CIRCLING	740-1	548 (600-1)	800-1 3/4	1700-3
			608 (700-1 3/4)	1508 (1600-3)



AK, 05 NOV 2020 to 31 DEC 2020

AK, 05 NOV 2020 to 31 DEC 2020