

WAAS CH <b>82640</b> W02A	APP CRS <b>015°</b>	Rwy Idg TDZE <b>1359</b> Apt Elev <b>1359</b>	<b>6011</b>
---------------------------------	------------------------	---	-------------

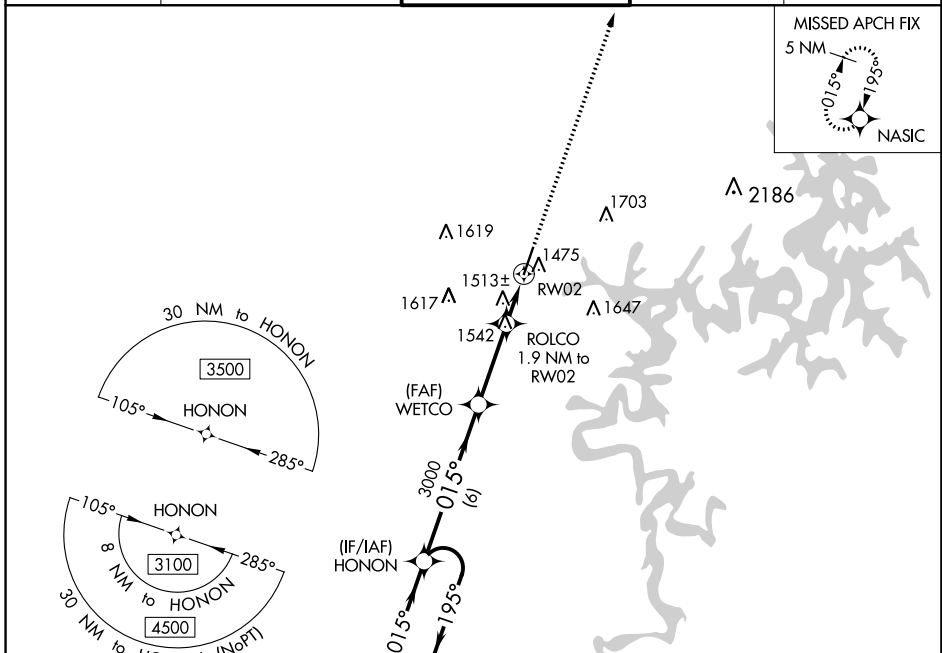
# RNAV (GPS) RWY 2

ROGERS EXECUTIVE-CARTER FIELD (ROG)

▼ For uncompensated Baro-VNAV systems, LNAV/VNAV NA below -17°C (2°F) or above 54°C (130°F). Rwy 2 helicopter visibility reduction below ¾ SM NA. DME/DME RNP-0.3 NA.

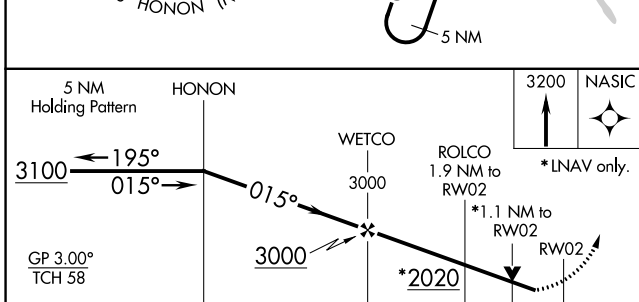
MISSED APPROACH: Climb to 3200 direct NASIC and hold.

AWOS-3PT <b>134.375</b>	RAZORBACK APP CON★ <b>126.6 305.2</b>	ROGERS TOWER★ <b>119.375 (CTAF) 0</b>	GND CON <b>118.0</b>	CLNC DEL <b>121.75</b>
----------------------------	--	--	-------------------------	---------------------------



SC-1, 05 NOV 2020 to 03 DEC 2020

SC-1, 05 NOV 2020 to 03 DEC 2020



ELEV 1359	TDZE 1359
-----------	-----------

CATEGORY	A	B	C	D
LPV DA		1620-7/8	261 (300-7/8)	
LNAV/VNAV DA		1674-1	315 (400-1)	
LNAV MDA	1780-1	421 (500-1)	1780-1¼	421 (500-1¼)
CIRCLING	1820-1	461 (500-1)	2020-1¾ 661 (700-1¾)	2020-2 661 (700-2)

