

WAAS CH 40003 W20A	APP CRS 195°	Rwy ldg TDZE 1354 Apt Elev 1359	6011
--	------------------------	---	-------------

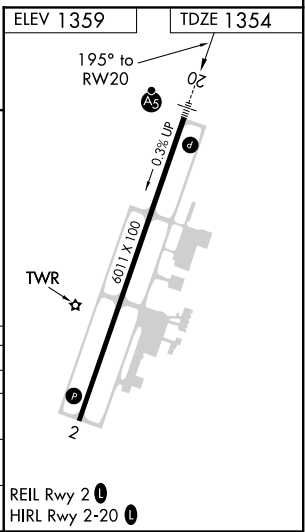
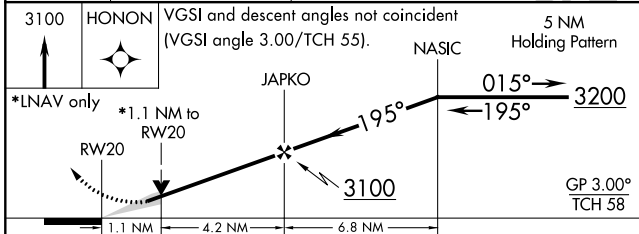
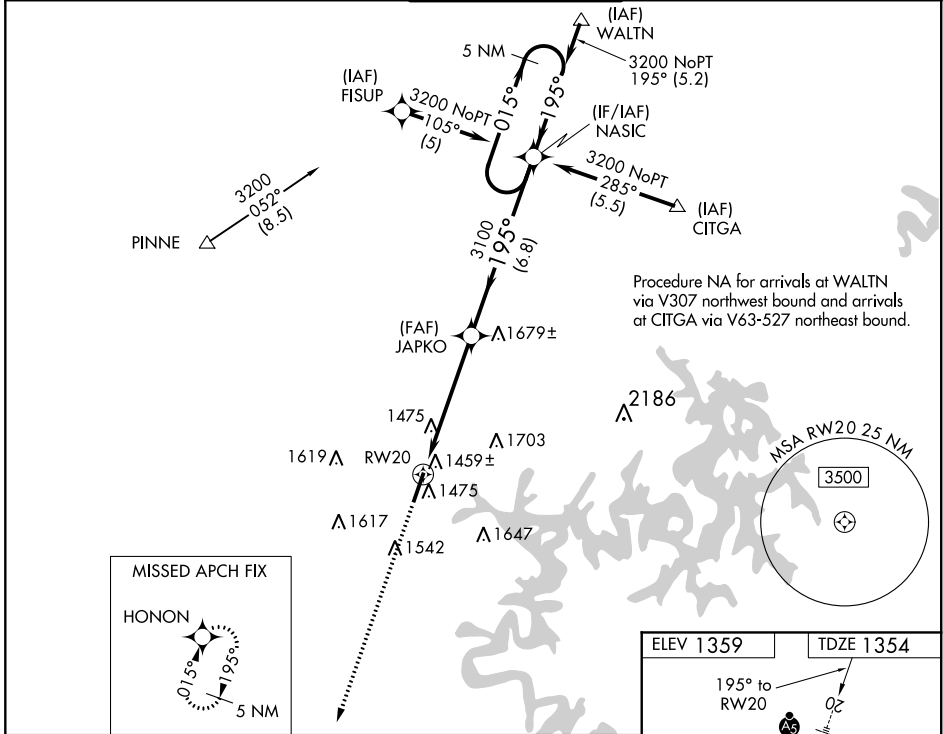
RNAV (GPS) RWY 20

ROGERS EXECUTIVE-CARTER FIELD (ROG)

▼ For inop MALSR, increase LNAV Cat D to 1¼. For uncompensated Baro-VNAV systems, LNAV/VNAV NA below -17°C (2°F) or above 46°C (114°F). DME/DME **▲** RNP-0.3 NA. If local altimeter setting not received, use Bentonville Muni altimeter setting and increase all DAs 22 feet and all MDAs 40 feet. Baro-VNAV and VDP NA when using Bentonville Muni altimeter setting.

MALSR MISSED APPROACH: Climb to 3100 direct HONON and hold.

AWOS-3PT 134.375	RAZORBACK APP CON* 126.6 305.2	ROGERS TOWER* 119.375 (CTAF) 0	GND CON 118.0	CLNC DEL 121.75
----------------------------	--	--	-------------------------	---------------------------



CATEGORY	A	B	C	D
LPV DA	1604-½		250 (300-½)	
LNAV/VNAV DA	1730-¾		376 (400-¾)	
LNAV MDA	1740-½		386 (400-½)	
CIRCLING	1820-1		2020-1	
	461 (500-1)		661 (700-1¾)	
			2020-2	
			661 (700-2)	

SC-1, 05 NOV 2020 to 03 DEC 2020

SC-1, 05 NOV 2020 to 03 DEC 2020