

LOC I-ASG <b>110.9</b>	APP CRS <b>183°</b>	Rwy Idg TDZE Apt Elev	<b>4939</b> <b>1351</b> <b>1353</b>
---------------------------	------------------------	-----------------------------	-------------------------------------------

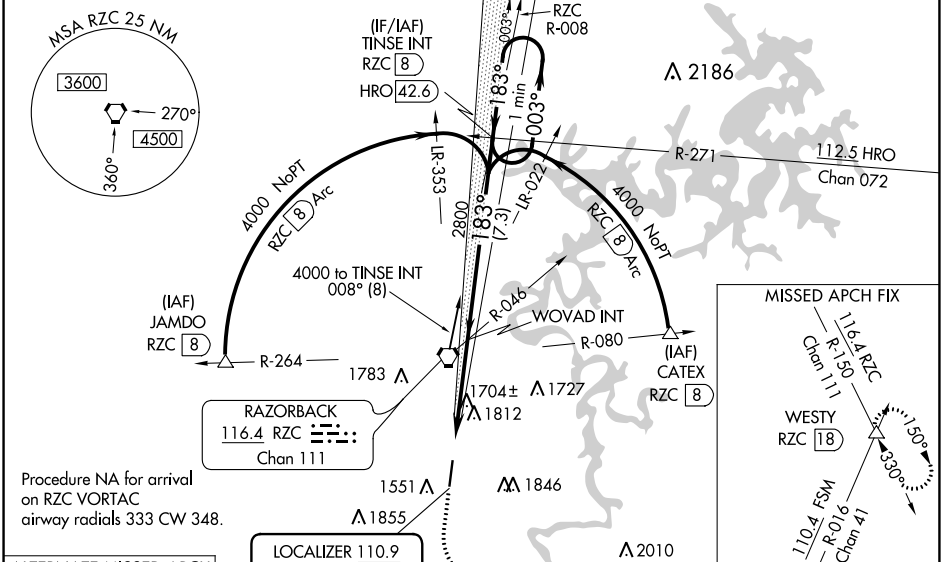
AL-5165 (FAA)

# ILS or LOC RWY 18

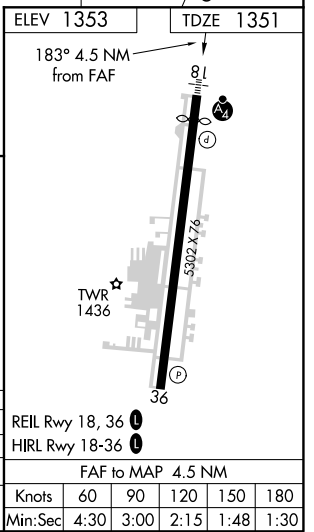
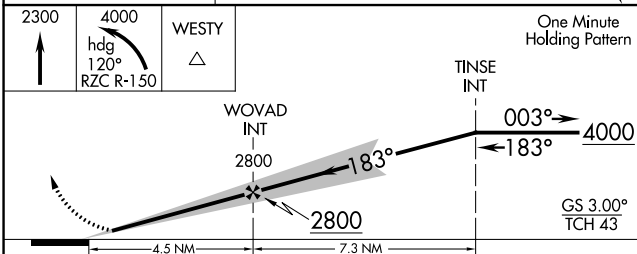
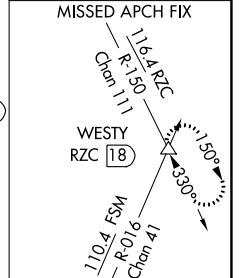
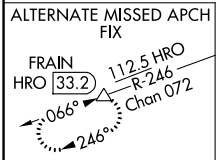
SPRINGDALE MUNI (ASG)

**MAJSAF** MISSED APPROACH: Climb to 2300 then climbing left turn to 4000 on heading 120° and RZC VORTAC R-150 to WESTY INT/RZC 18 DME and hold.

AWOS-3 <b>124.675</b>	RAZORBACK APP CON* <b>126.6 305.2</b>	SPRINGDALE TOWER* <b>118.2 (CTAF) 0</b>	GND CON <b>121.6</b>	REIL 18, 36 <b>122.8 0</b>	UNICOM <b>122.95</b>
--------------------------	------------------------------------------	--------------------------------------------	-------------------------	-------------------------------	-------------------------



Procedure NA for arrival on RZC VORTAC airway radials 333 CW 348.



CATEGORY	A	B	C	D
S-ILS 18		1605-3/4	254 (300-3/4)	
S-LOC 18	1960-3/4	609 (700-3/4)	1960-1 1/2	609 (700-1 1/2)
<b>CIRCLING</b>	1960-1 607 (700-1)	2000-1 647 (700-1)	2020-1 3/4 667 (700-1 3/4)	2220-2 3/4 867 (900-2 3/4)

REIL Rwy 18, 36	<b>0</b>
HIRL Rwy 18-36	<b>0</b>
FAF to MAP 4.5 NM	
Knots	60 90 120 150 180
Min:Sec	4:30 3:00 2:15 1:48 1:30

SC-1, 05 NOV 2020 to 03 DEC 2020

SC-1, 05 NOV 2020 to 03 DEC 2020