

WAAS Ch 70312 W18A	APP CRS 183°	Rwy Idg 4939 TDZE 1351 Apt Elev 1353
--	------------------------	---

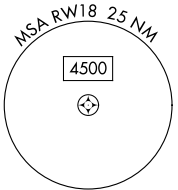
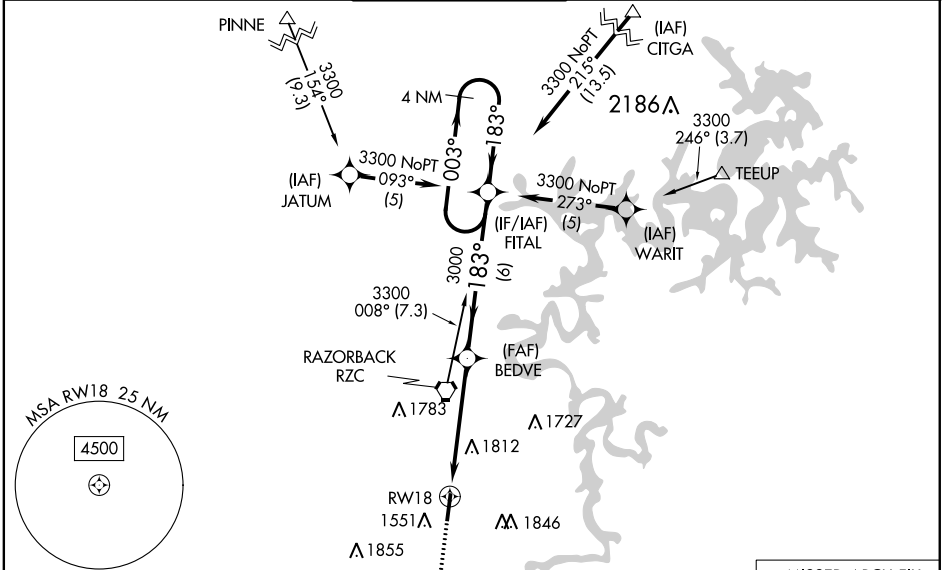
RNAV (GPS) RWY 18

SPRINGDALE MUNI (ASG)

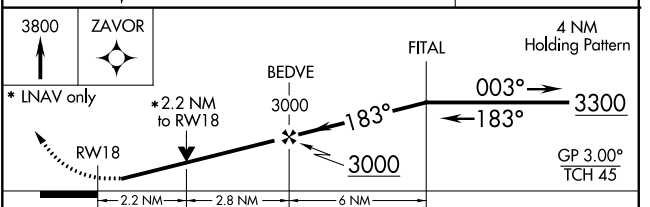
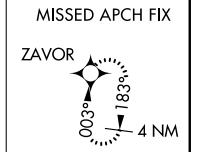
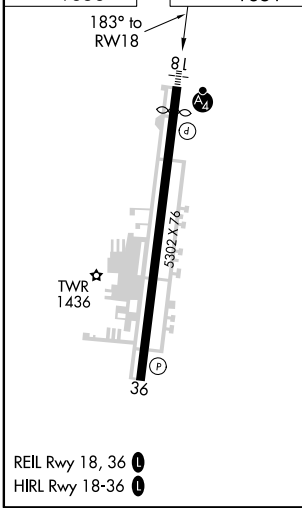
NA DME/DME RNP-0.3 NA. Circling NA east of Rwy 18-36. When local altimeter setting not received, use Fayetteville/Drake Field altimeter setting and increase all DA 39 feet and all MDA 40 feet; increase LPV all Cats and LNAV Cat C/D visibility 1/8 mile, Circling Cat C/D visibility 1/4 mile. For inoperative MALSF, increase LPV all Cats visibility to 1 mile, LNAV Cat C/D visibility to 2 miles. For inoperative MALSF when using Fayetteville/Drake Field altimeter setting, increase LPV all Cats visibility to 1 1/8 mile, LNAV Cat C visibility to 2 1/4 mile. VDP NA when using Fayetteville/Drake Field altimeter setting. Helicopter visibility reduction below 3/4 SM NA.

MALSF 	MISSED APPROACH: Climb to 3800 direct ZAVOR and hold.
-----------	--

AWOS-3 124.675	RAZORBACK APP CON * 126.6 305.2	SPRINGDALE TOWER * 118.2 (CTAF)	GND CON 121.6	REIL 18, 36 122.8	UNICOM 122.95
--------------------------	---	---	-------------------------	-----------------------------	-------------------------



ELEV 1353	TDZE 1351
-----------	-----------



CATEGORY	A	B	C	D
LPV DA		1642-3/4	291 (300-3/4)	
LNAV/VNAV DA	NA			
LNAV MDA	2080-3/4 729 (800-3/4)	2080-1 729 (800-1)	2080-17/8	729 (800-17/8)
C CIRCLING	2080-1	727 (800-1)	2080-2 727 (800-2)	2220-23/4 867 (900-23/4)

SC-1, 05 NOV 2020 to 03 DEC 2020

SC-1, 05 NOV 2020 to 03 DEC 2020