

| | | |
|--|------------------------|---|
| WAAS Ch 77512 W36A | APP CRS 003° | Rwy Idg TDZE 1353 Apt Elev 1353 |
|--|------------------------|---|

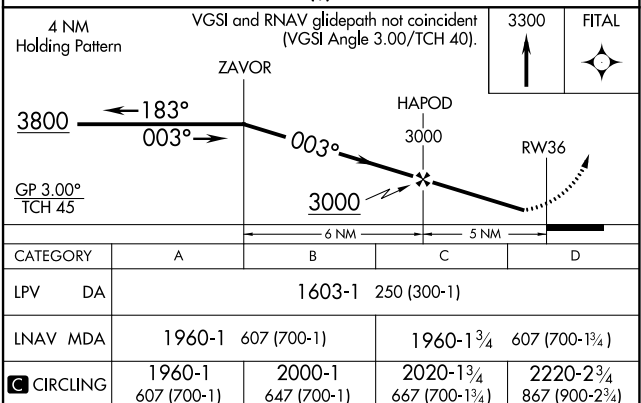
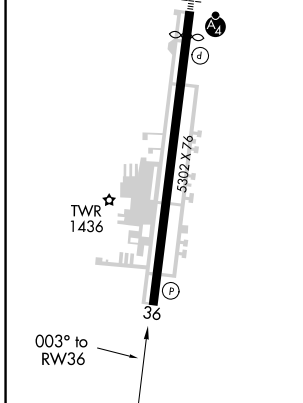
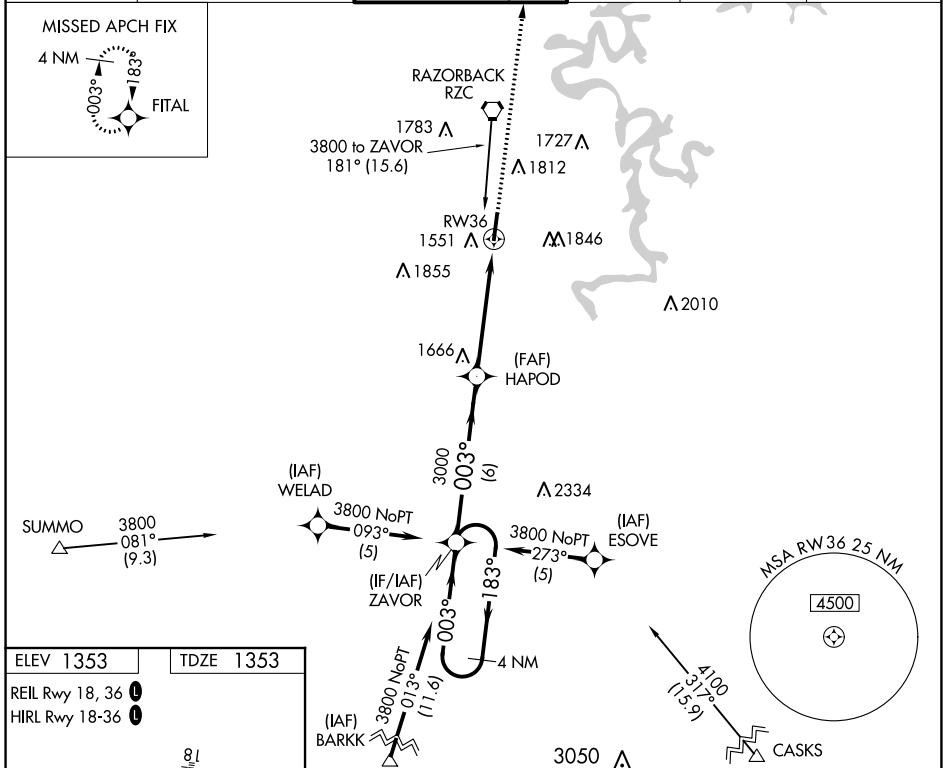
RNAV (GPS) RWY 36

SPRINGDALE MUNI (ASG)

⚠ DME/DME RNP-0.3 NA. Circling NA east of Rwy 18-36. When local altimeter setting not received, use Fayetteville/Drake Field altimeter setting and increase all DA 39 feet and all MDA 40 feet; increase visibility LNAV Cat C/D 1/8 mile and Circling Cat C/D 1/4 mile. Helicopter visibility reduction below 3/4 SM NA.

⚠ MISSED APPROACH: Climb to 3300 direct FITAL and hold.

| | | | | | |
|--------------------------|--|--|-------------------------|-------------------------------|-------------------------|
| AWOS-3 124.675 | RAZORBACK APP CON* 126.6 305.2 | SPRINGDALE TOWER* 118.2 (CTAF) 0 | GND CON 121.6 | REIL 18, 36 122.8 0 | UNICOM 122.95 |
|--------------------------|--|--|-------------------------|-------------------------------|-------------------------|



SC-1, 05 NOV 2020 to 03 DEC 2020

SC-1, 05 NOV 2020 to 03 DEC 2020