

VOR/DME JBR <b>108.6</b> Chan <b>23</b>	APP CRS <b>227°</b>	Rwy Idg TDZE Apt Elev	<b>6200</b> <b>262</b> <b>262</b>
-----------------------------------------------	------------------------	-----------------------------	-----------------------------------------

# VOR RWY 23

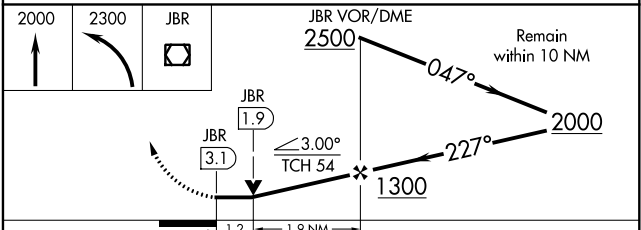
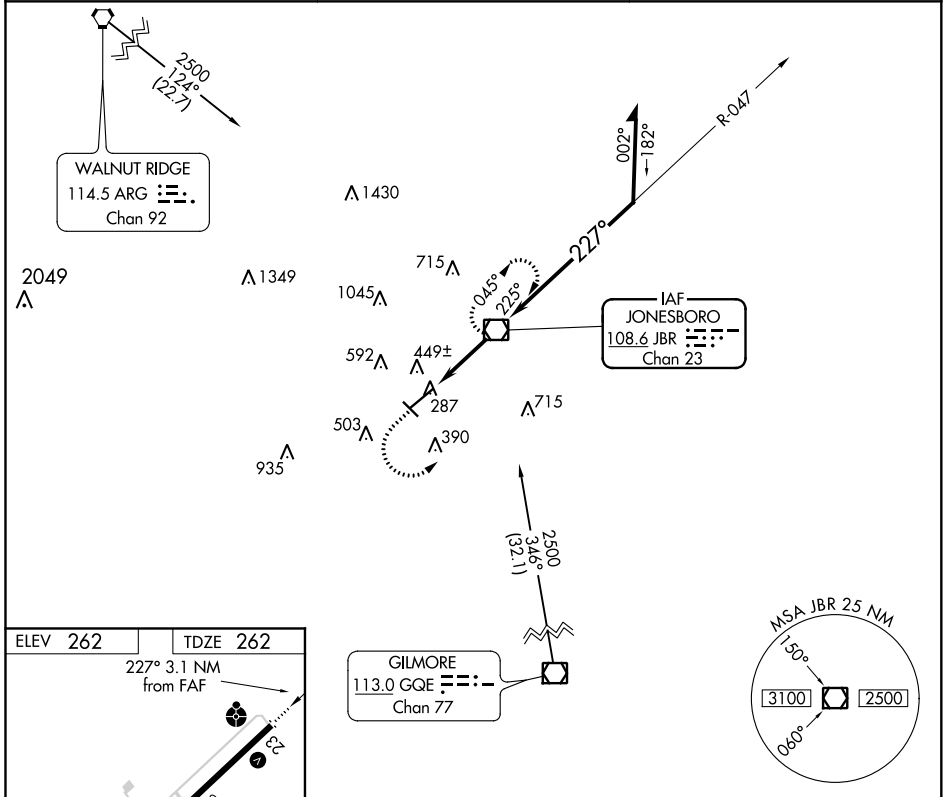
JONESBORO MUNI (JBR)

**⚠** Circling Rwy 31 NA at night. Circling NA northwest of Rwy 5-23. Rwy 23 helicopter visibility reduction below ¼ SM NA. When local altimeter setting not received, use Walnut Ridge altimeter setting and increase all MDAs 60 feet and visibility S-23 Cat C/D ½ SM.

**ODALS**  
⚠

**MISSED APPROACH:** Climb to 2000 then climbing left turn to 2300 direct JBR VOR/DME and hold.

ASOS <b>118.525</b>	MEMPHIS CENTER <b>120.075 289.4</b>	UNICOM <b>123.0 (CTAF)</b> <b>0</b>
------------------------	----------------------------------------	----------------------------------------



MIRL Rwy 5-23 and 13-31 <b>0</b>				
FAF to MAP 3.1 NM				
Knots	60	90	120	150
Min:Sec	3:06	2:04	1:33	1:14
180	1:02			
CATEGORY	A	B	C	D
S-23	700-¾	438 (500-¾)	700-1½	438 (500-1½)
CIRCLING	740-1	478 (500-1)	740-1½	820-2
			478 (500-1½)	558 (600-2)

SC-1, 05 NOV 2020 to 03 DEC 2020

SC-1, 05 NOV 2020 to 03 DEC 2020