

| | | |
|-------------|----------|-------------|
| APP CRS | Rwy Idg | 3779 |
| 263° | TDZE | 632 |
| | Apt Elev | 634 |

RNAV (GPS) RWY 26

GRIFFITH-MERRILLVILLE (Ø5C)

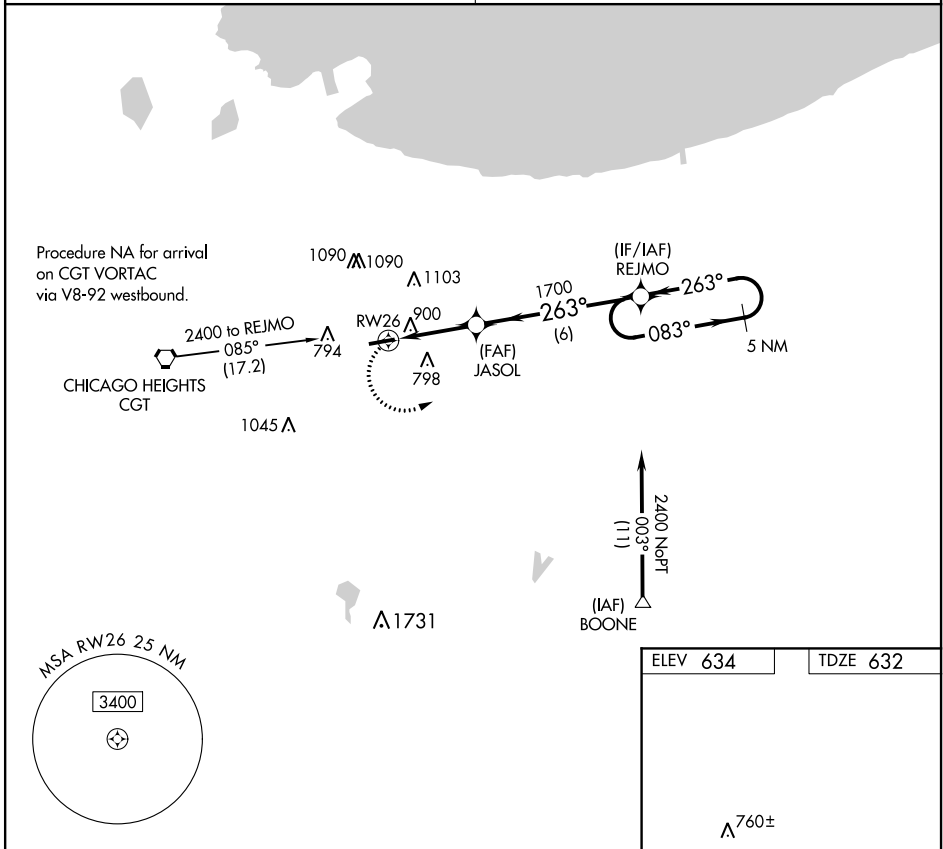
RNP APCH

▼ Obtain local altimeter setting on CTAF; when not received use Chicago Midway
 ▲ NA Init altimeter setting and increase all MDAs 60 feet. Visibility reduction by
 helicopters NA. Procedure NA at night.

MISSED APPROACH: Climbing left
 turn to 2400 direct REJMO and hold.

CHICAGO APP CON
133.1 285.6

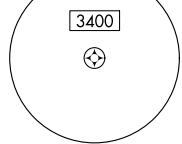
UNICOM
123.0 (CTAF) 0



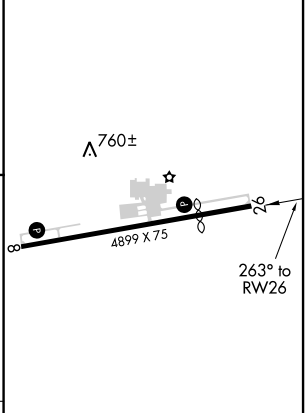
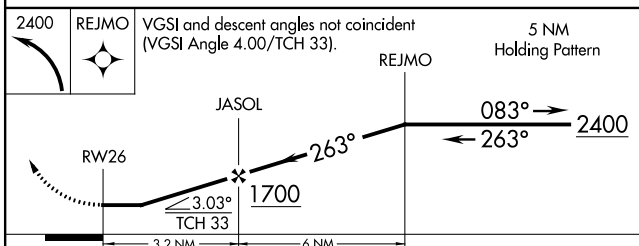
EC-2, 05 NOV 2020 to 03 DEC 2020

EC-2, 05 NOV 2020 to 03 DEC 2020

MSA RW26 25 NM



| | |
|----------|----------|
| ELEV 634 | TDZE 632 |
|----------|----------|



| CATEGORY | A | B | C | D |
|-----------|--------|-------------|---|----|
| LNNAV MDA | 1160-1 | 528 (600-1) | | NA |
| CIRCLING | 1200-1 | 566 (600-1) | | NA |

REL Rwy 8 and 26 0
 MRL Rwy 8-26 0