

APP CRS	Rwy Idg	4899
083°	TDZE	634
	Apt Elev	634

RNAV (GPS) RWY 8

GRIFFITH-MERRILLVILLE (Ø5C)

RNP APCH.

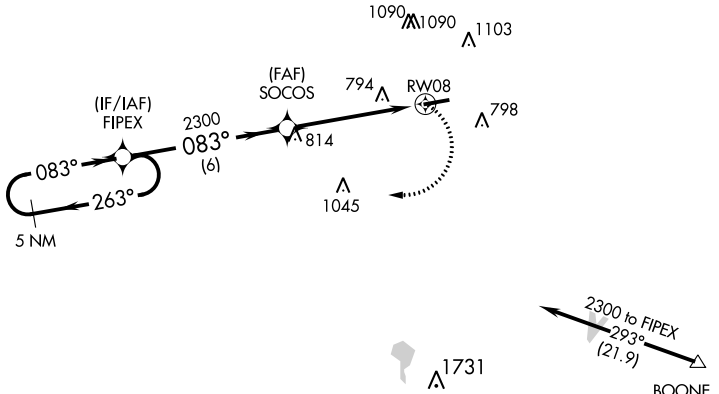
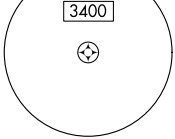
▼ Obtain local altimeter setting on CTAF; when not received use Chicago Midway
 ▲ NA Init altimeter setting and increase all MDAs 60 feet. Visibility reduction by helicopters NA. Procedure NA at night.

MISSED APPROACH: Climbing right turn to 2300 direct FIPEX and hold.

CHICAGO APP CON
133.1 285.6

UNICOM
123.0 (CTAF) 1

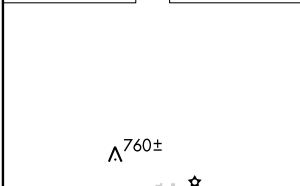
MSA RW08 25 NM



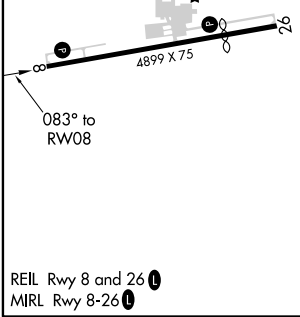
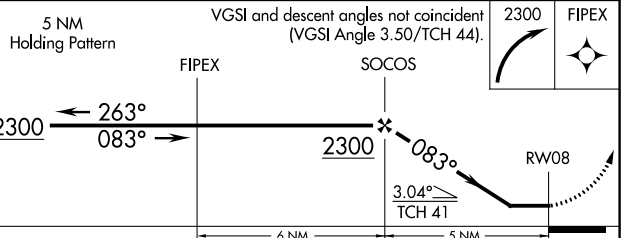
EC-2, 05 NOV 2020 to 03 DEC 2020

EC-2, 05 NOV 2020 to 03 DEC 2020

ELEV **634** TDZE **634**



Procedure NA for arrivals at BOONE via V422 southeastbound.



CATEGORY	A	B	C	D
LNAV MDA	1080-1	446 (500-1)	NA	
<input checked="" type="checkbox"/> CIRCLING	1200-1	566 (600-1)	NA	