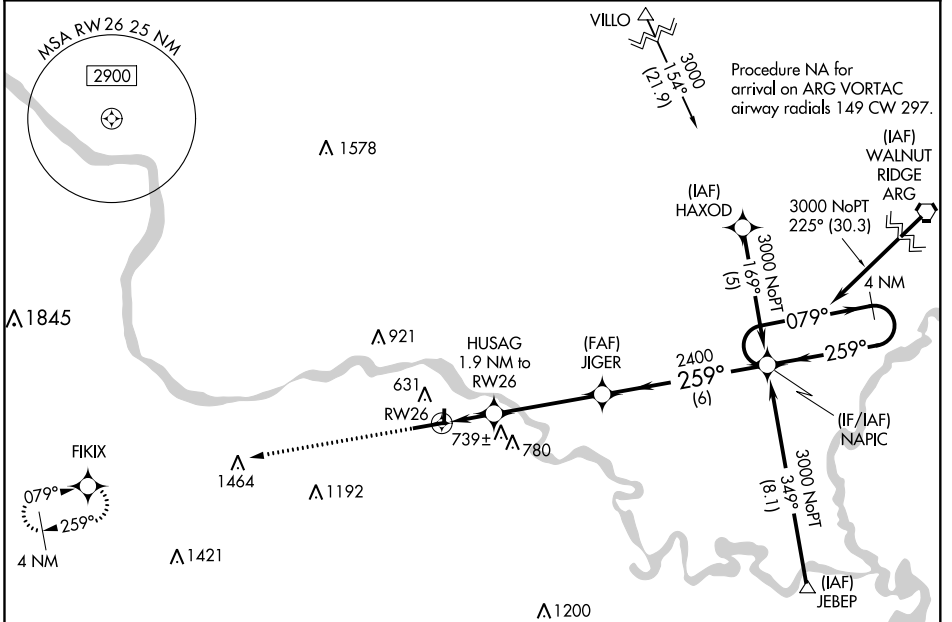


RNAV (GPS) RWY 26

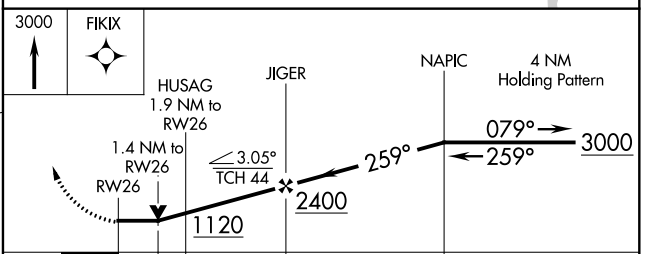
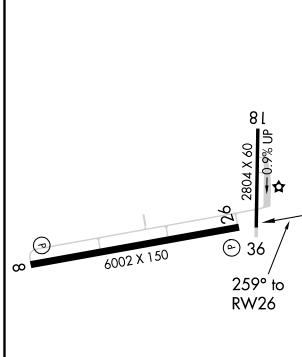
BATESVILLE RGNL (BVX)

APP CRS	Rwy Idg	6002
259°	TDZE	465
	Apt Elev	465

RNP APCH.		MISSED APPROACH: Climb to 3000 direct FIKIX and hold.
<p>▽ Circling NA N of Rwy 8-26.</p> <p>▲ Rwy 26 helicopter visibility reduction below ¾ SM NA.</p>		
AWOS-3PT	MEMPHIS CENTER	UNICOM
126.375	126.85 281.55	122.8 (CTAF) 0



ELEV 465	TDZE 465
----------	----------



CATEGORY	A	B	C	D
LNAV MDA	940-1	475 (500-1)	940-1 3/8 475 (500-1 3/8)	940-1 1/2 475 (500-1 1/2)
CIRCLING	980-1	515 (600-1)	980-1 1/2 515 (600-1 1/2)	1040-2 575 (600-2)

REIL Rwy 8 and 26 **0**
MIRL Rwy 8-26 **0**

BATESVILLE, ARKANSAS
Amdt 1B 03JAN19

35°44'N-91°39'W

RNAV (GPS) RWY 26

SC-1, 05 NOV 2020 to 03 DEC 2020

SC-1, 05 NOV 2020 to 03 DEC 2020