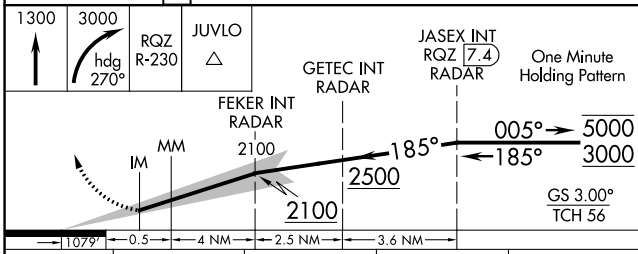
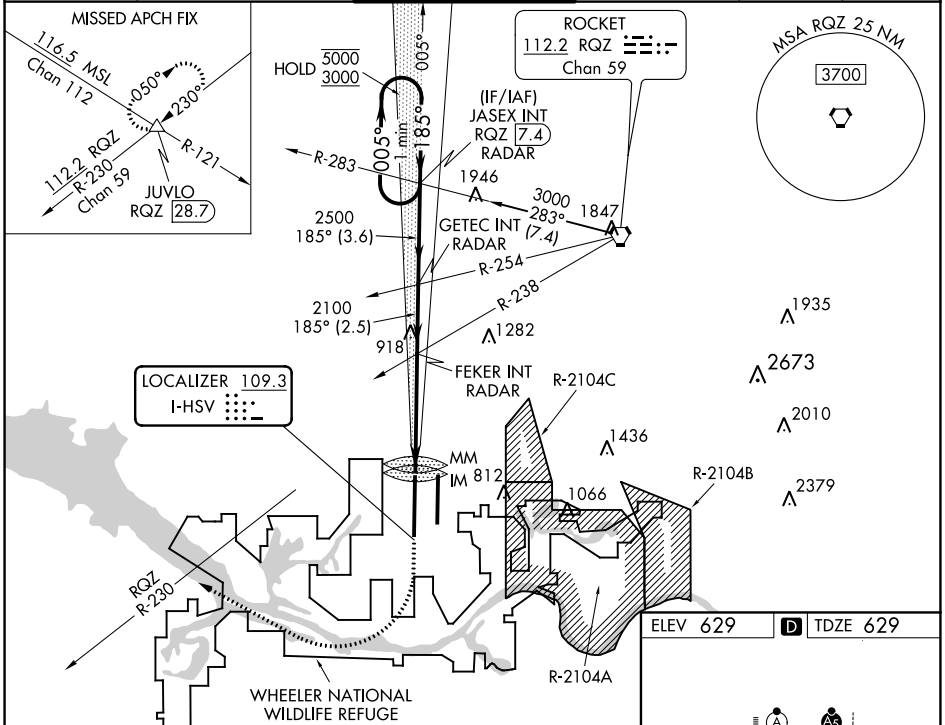


LOC I-HSV 109.3	APP CRS 185°	Rwy ldg 12600
		TDZE 629
		Apt Elev 629

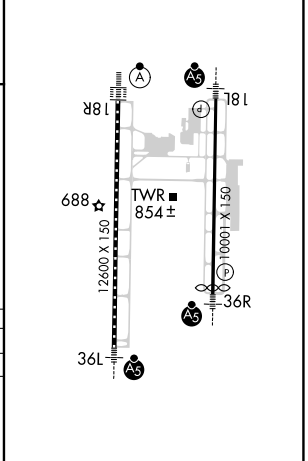
ILS RWY 18R (CAT II)

HUNTSVILLE INTL-CARL T JONES FIELD (HSV)

<p>Simultaneous approach authorized. Procedure NA when control tower closed.</p>	<p>ALSF-2</p>	<p>MISSED APPROACH: Climb to 1300 then climbing right turn to 3000 on heading 270° and RQZ R-230 to JUVLO INT/RQZ 28.7 DME and hold.</p>			
			<p>ATIS 121.25</p>	<p>HUNTSVILLE APP CON * 125.6 354.1</p>	<p>HUNTSVILLE TOWER * 127.6 (CTAF) 0 350.35</p>



ELEV 629	TDZE 629
----------	----------



CATEGORY	A	B	C	D
S-ILS 18R	RA 105/12 100 DA 729			

CATEGORY II ILS - SPECIAL AIRCREW & AIRCRAFT CERTIFICATION REQUIRED

HIRL Rwy 18L-36R and 18R-36L

SE-4, 05 NOV 2020 to 03 DEC 2020

SE-4, 05 NOV 2020 to 03 DEC 2020