

ILS or LOC RWY 18L

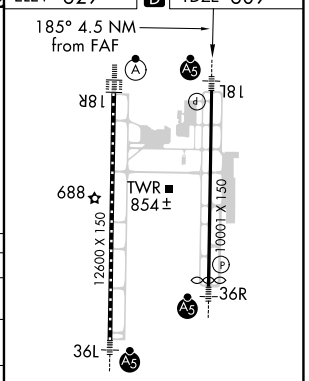
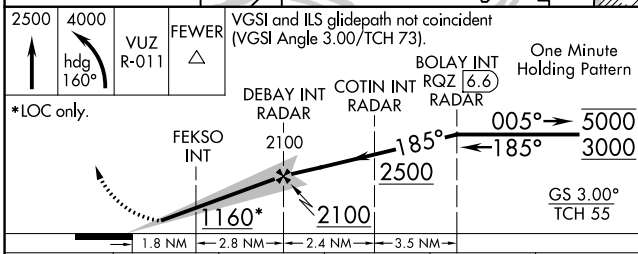
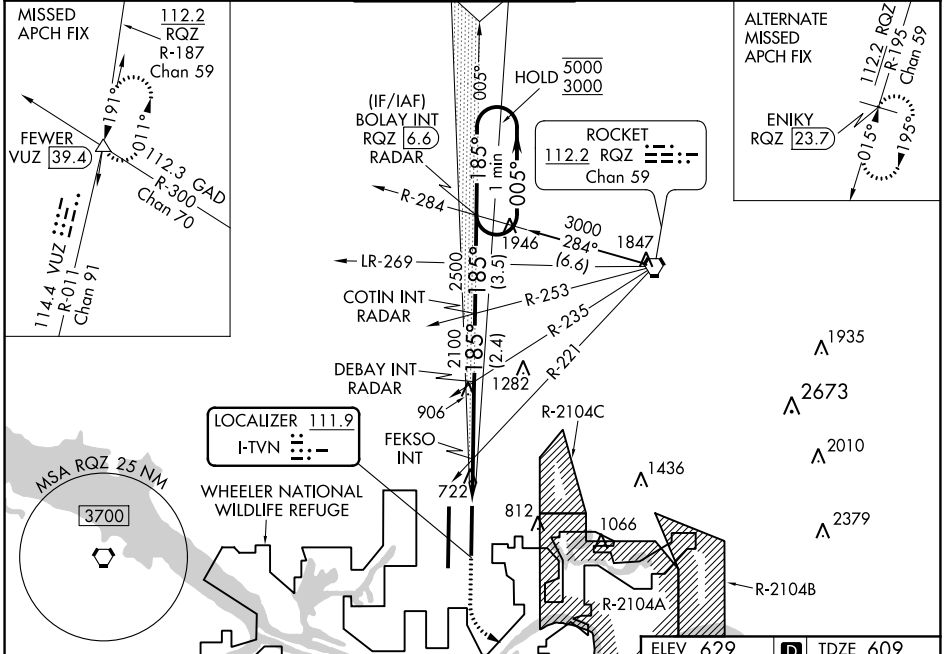
HUNTSVILLE INTL-CARL T JONES FIELD (HSV)

LOC I-TVN 111.9	APP CRS 185°	Rwy Idg 9801
		TDZE 609
		Apt Elev 629

ASR Simultaneous approach authorized. Circling NA for Cat C/D/E east of Rwy 18L-36R. For inop ALS increase S-ILS 18L Cat E visibility to RVR 4000 and S-LOC 18L Cat E visibility to 1½ SM; FEKSO FIX MINIMUMS increase S-LOC 18L Cat C/D/E visibility to RVR 5500. ** RVR 1800 authorized with the use of FD or AP or HUD to DA.

MALSR MISSED APPROACH: Climb to 2500 then climbing left turn to 4000 on heading 160° and VUZ R-011 to FEWER INT/VUZ 39.4 DME and hold.

ATIS 121.25	HUNTSVILLE APP CON * 125.6 354.1	HUNTSVILLE TOWER * 127.6 (CTAF) 0 350.35	GND CON 121.9 269.525	CLNC DEL 120.35	UNICOM 122.95
-----------------------	--	--	---------------------------------	---------------------------	-------------------------



CATEGORY	A	B	C	D	E
S-ILS 18L **	809/24 200 (200-½)				
S-LOC 18L	1160/24	551 (600-½)	1160/60		551 (600-1¼)
CIRCLING	1160-1	531 (600-1)	1160-1½ 531 (600-1½)	1240-2 611 (700-2)	1260-2¼ 631 (700-2¼)
FEKSO FIX MINIMUMS (DUAL VOR RECEIVERS REQUIRED)					
S-LOC 18L	980/24	371 (400-½)	980/35 371 (400-¾)		
CIRCLING	1160-1	531 (600-1)	1160-1½ 531 (600-1½)	1240-2 611 (700-2)	1260-2¼ 631 (700-2¼)
TDZ/CL Rws 18R and 36L HRL Rws 18L-36R and 18R-36L					
FAF to MAP 4.5 NM					
Knots 60 90 120 150 180 Min:Seq 4:30 3:00 2:15 1:48 1:30					

SE-4, 05 NOV 2020 to 03 DEC 2020

SE-4, 05 NOV 2020 to 03 DEC 2020